

95 Express Monthly Operations Report – December 2014

General

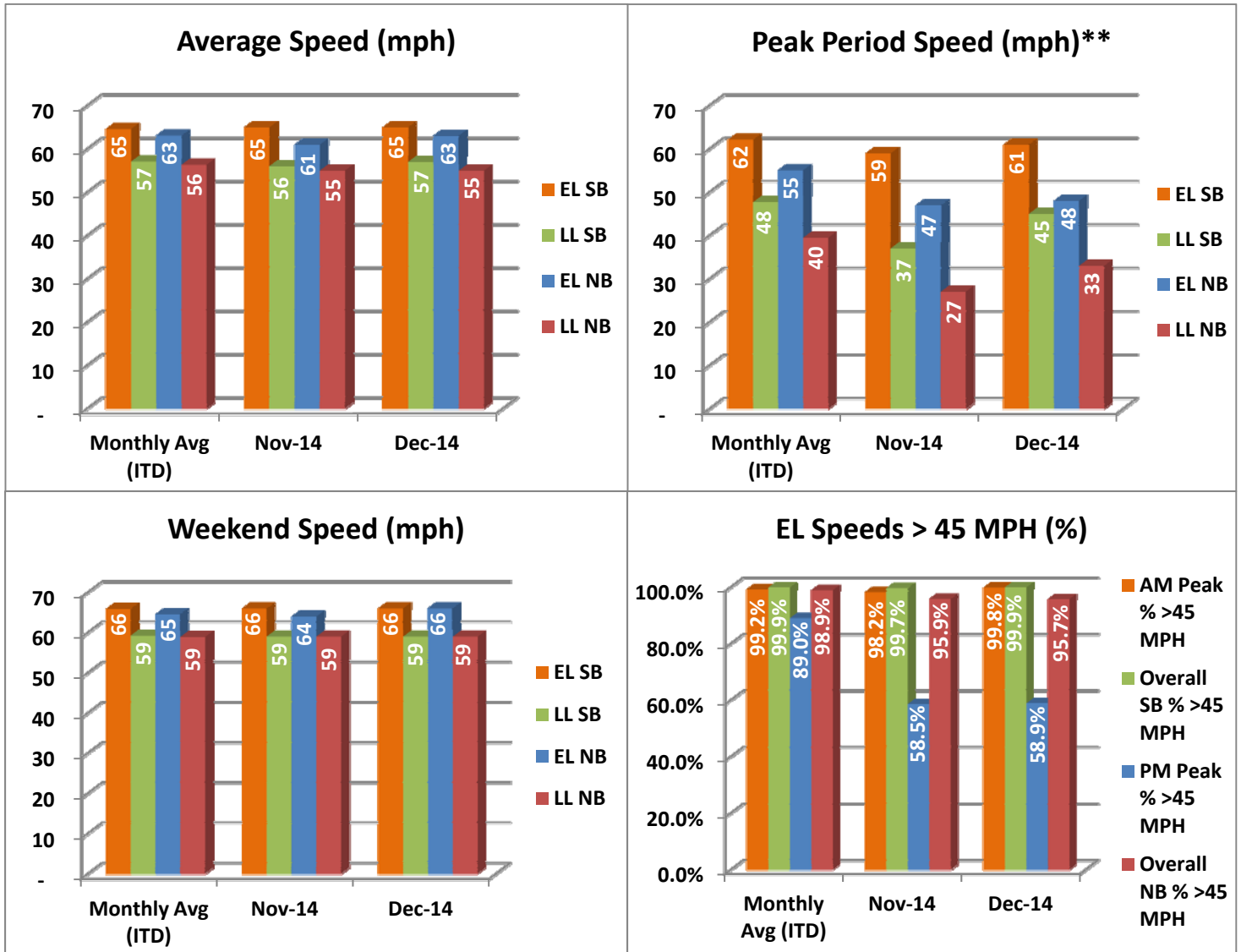
In total, the 95 Express Lanes:

- ✓ Serviced 1,595,054 vehicle trips in December 2014 (20.8M total trips in 2014), bringing the total since opening (December 5, 2008) to approximately 109.1 million trips.
- ✓ Had estimated monthly toll revenue of \$2.00 million in December 2014 (\$22.9M total revenue in 2014), bringing the total revenue to date to approximately \$94.0 million.
- ✓ Decreased to a total of 9,171 registered vehicles, resulting in 47,292 toll exempt trips.
- ✓ **Also note that for December 2014, the Department recognizes that the values provided for Southbound 95 Express are below typical and trends. The Department reserves the right to update and/or replace this report at a later date.**

<u>December 2014 Statistics</u>	<u>Southbound</u>		<u>Northbound</u>			
Total Trips	700,398		894,656			
Exempt Trips	19,527		27,765			
Revenue						
	\$770,168		\$1,226,616			
Tolls						
- Range***	\$0.00 - \$8.50		\$0.00 - \$10.50			
- Avg. Weekday	\$1.60		\$1.84			
- Avg. Peak Period**	\$2.67		\$4.29			
- Avg. Weekend	\$0.65		\$0.55			
- Avg. Off Peak	\$1.28		\$1.12			
- 85 th Percentile Weekday	\$3.00		\$2.75			
Volume (veh)						
	EL	LL	EL	LL		
- Avg. Weekday	24,249	104,284	30,673	98,804		
- Avg. Peak Period**	6,398	17,059	7,494	16,436		
Speed (mph)						
	EL	LL	Δ	EL	LL	Δ
- Avg. Overall	65	57	8	63	55	8
- Avg. Peak Period**	61	45	16	48	33	15
Operated Above 45 MPH						
	99.9%		95.7%			
Remained Open to Motorists						
	74.5%		91.9%			
Closed due to Planned Construction						
	23.2%		2.8%			
Closed due to Non-recurring Events						
	2.3%		5.4%			
<small>EL (Express Lanes); LL (Local Lanes); **Peak Period is defined as 6-9 AM (southbound) and 4-7 PM (northbound). ***Maximum Toll Increase started in March 2014; from \$1.00 per mile, maximum, to \$1.50 per mile.</small>						

Operations/Traffic Statistics - Speed Data

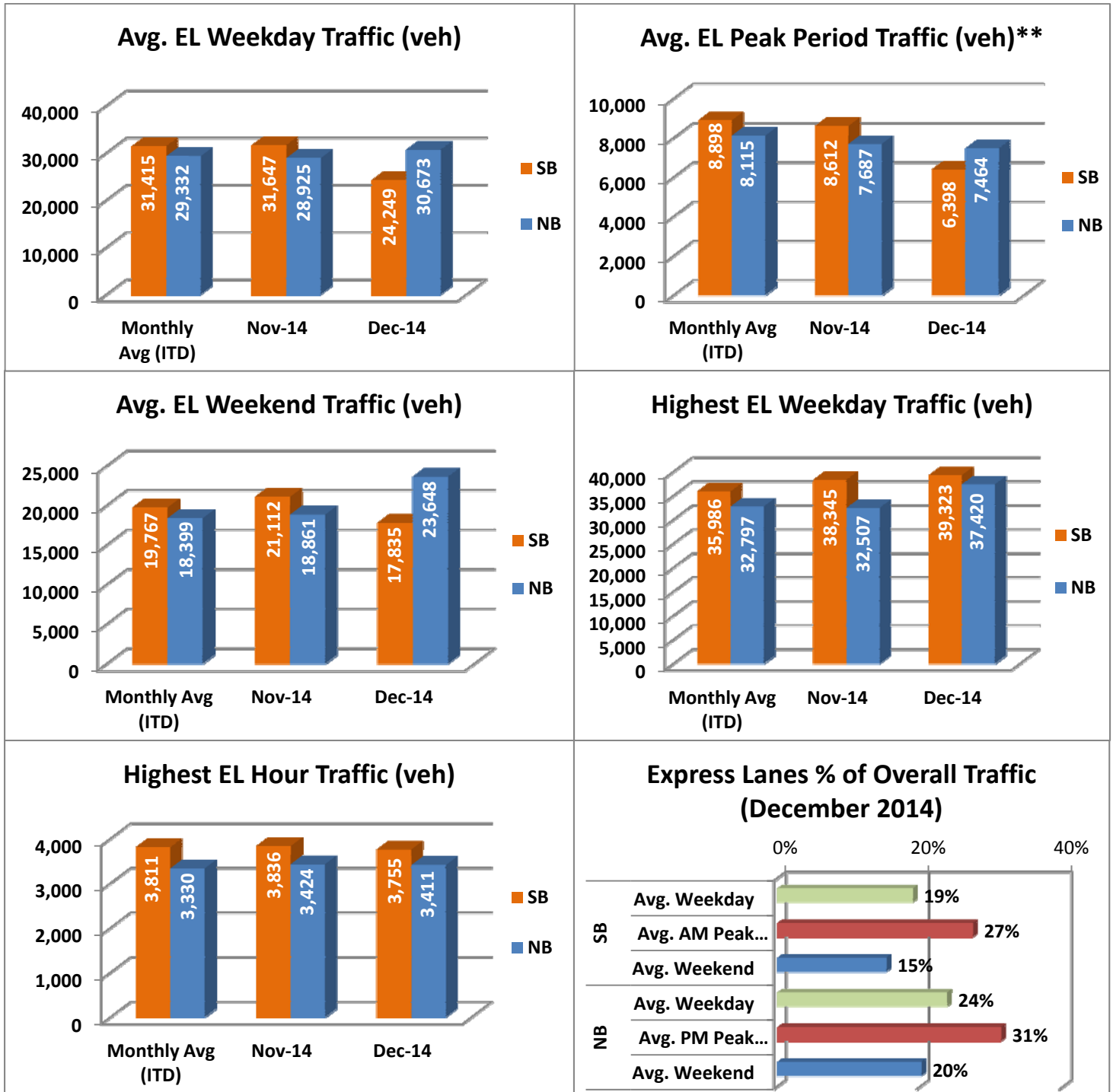
** Peak Period is defined as 6-9 AM (southbound) and 4-7 PM (northbound).



NOTE: ITD = Inception to Date; EL = Express Lanes; LL = Local Lanes

Operations/Traffic Statistics - Volume Data

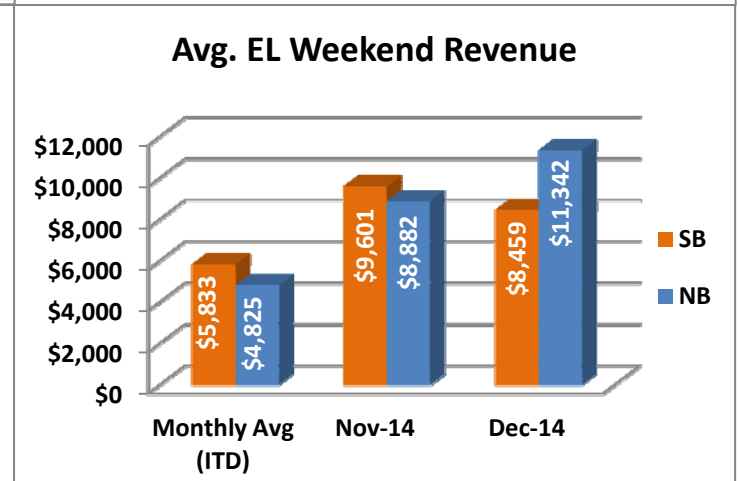
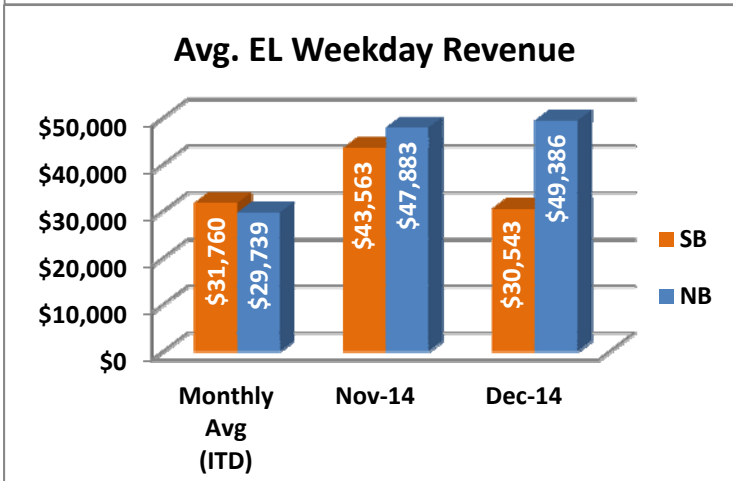
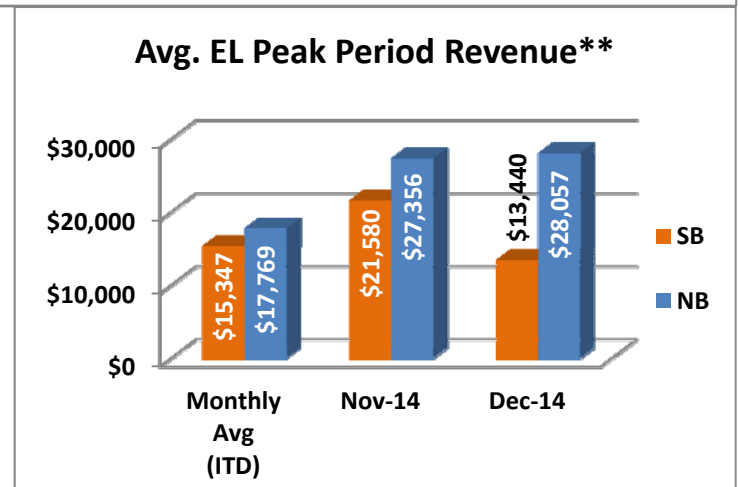
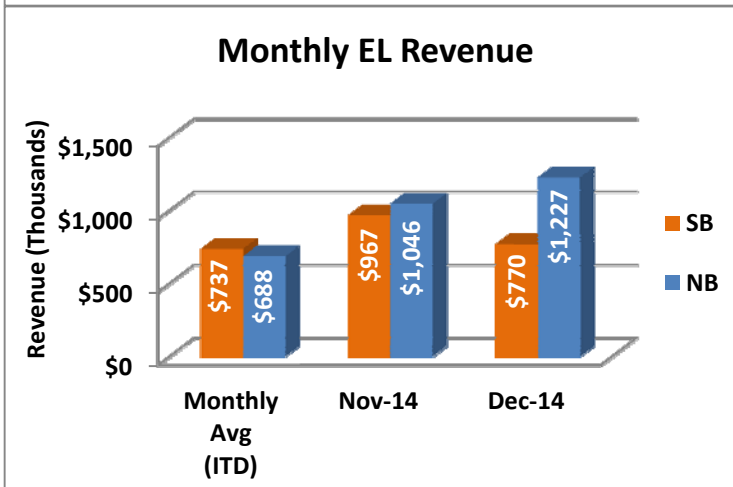
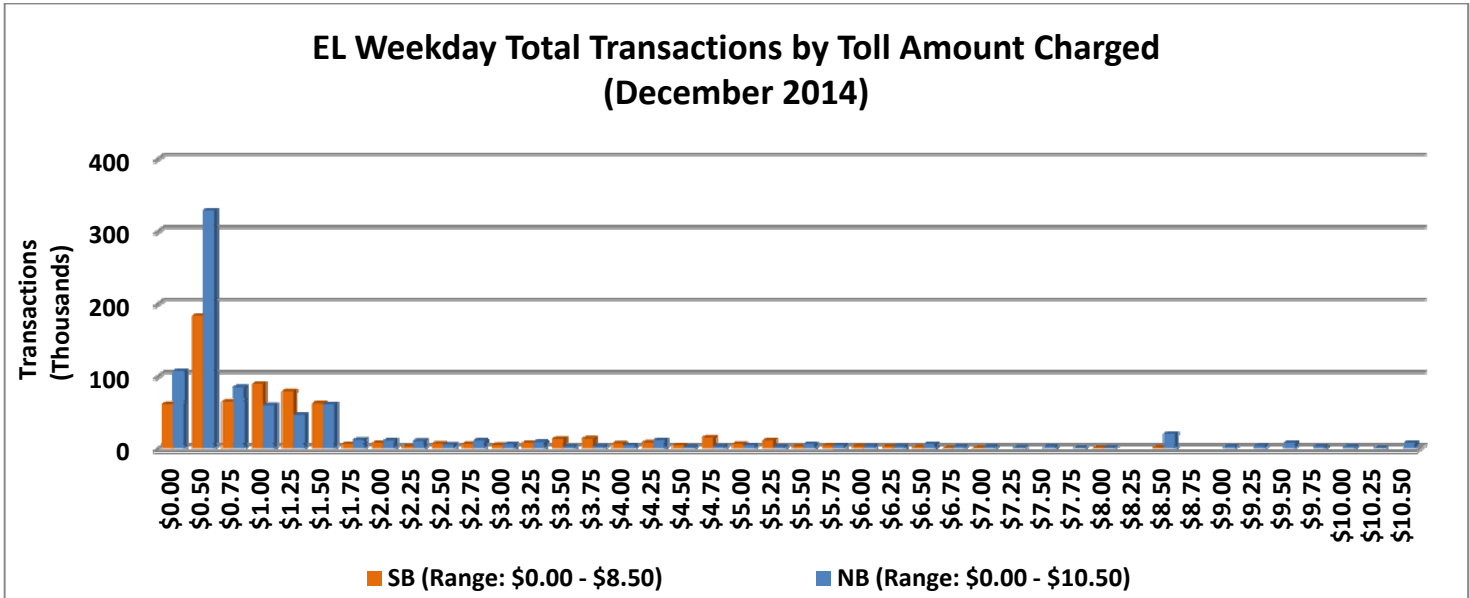
** Peak Period is defined as 6-9 AM (southbound) and 4-7 PM (northbound).



NOTE: ITD = Inception to Date

Revenue/Tolls Statistics

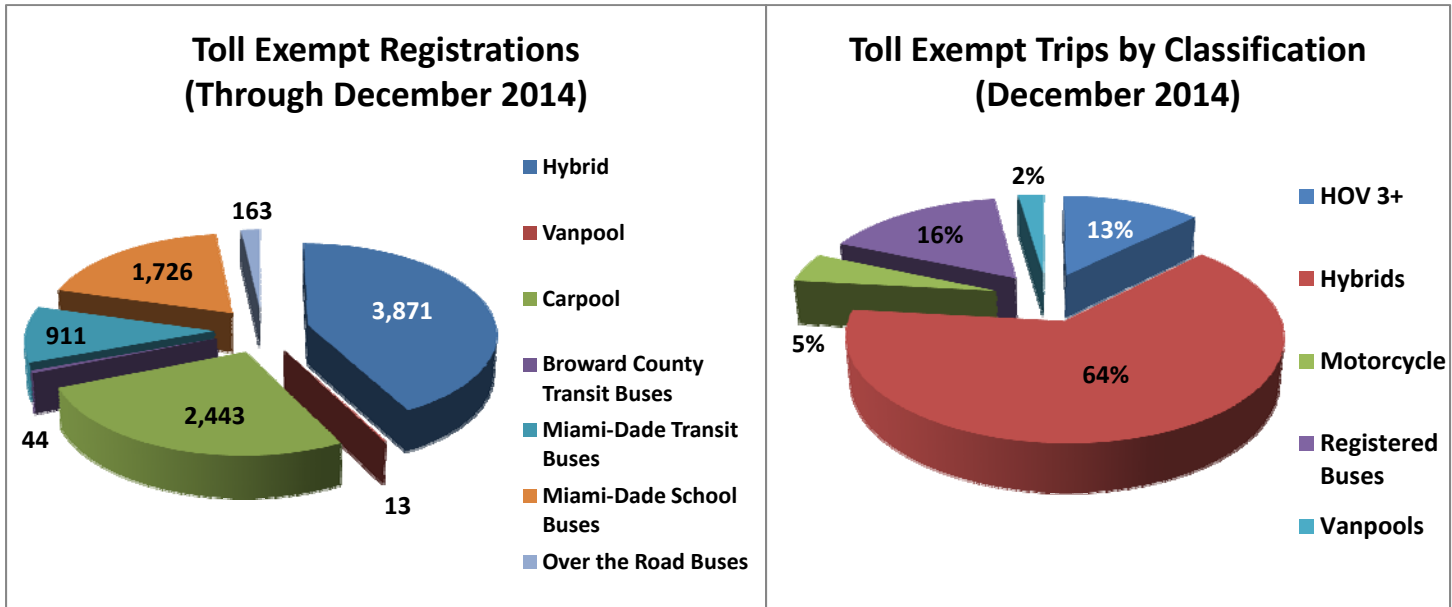
** Peak Period is defined as 6-9 AM (southbound) and 4-7 PM (northbound). Maximum toll increase started March 2014; from \$1.00 per mile, maximum, to \$1.50 per mile.



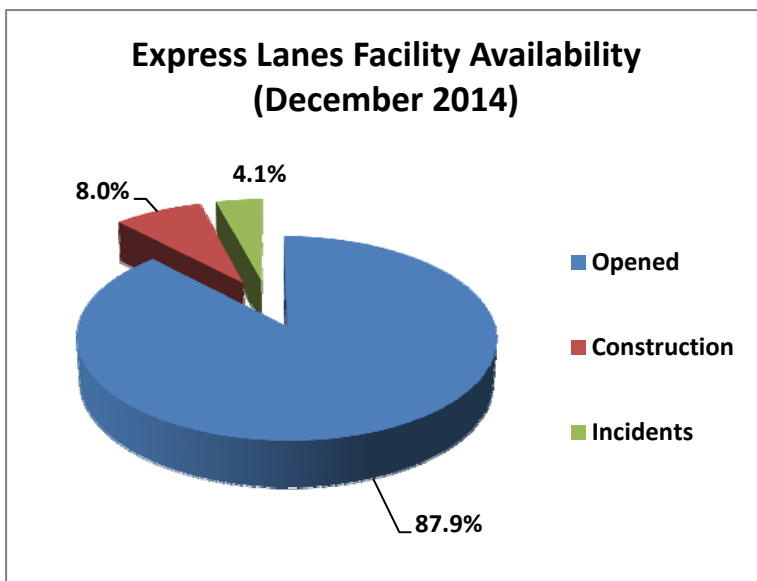
NOTE: ITD = Inception to Date

Registrations—Toll Exempt Trips

The total registrations through December 2014 decreased to 9,171. The 47,292 Toll Exempt Trips for this month are shown by classification below.



Facility Availability



The entire 95 Express lanes (both directions) were open to motorists 87.9% of the time, while closed 8.0% due to 21 planned construction/ maintenance events (each lasting approximately 5 hours, 40 minutes in duration, on average) and 4.1% due to 176 non-recurring events (each lasting approximately 20.8 minutes in duration, on average).