

## 95 Express Monthly Operations Report – February 2014

### General

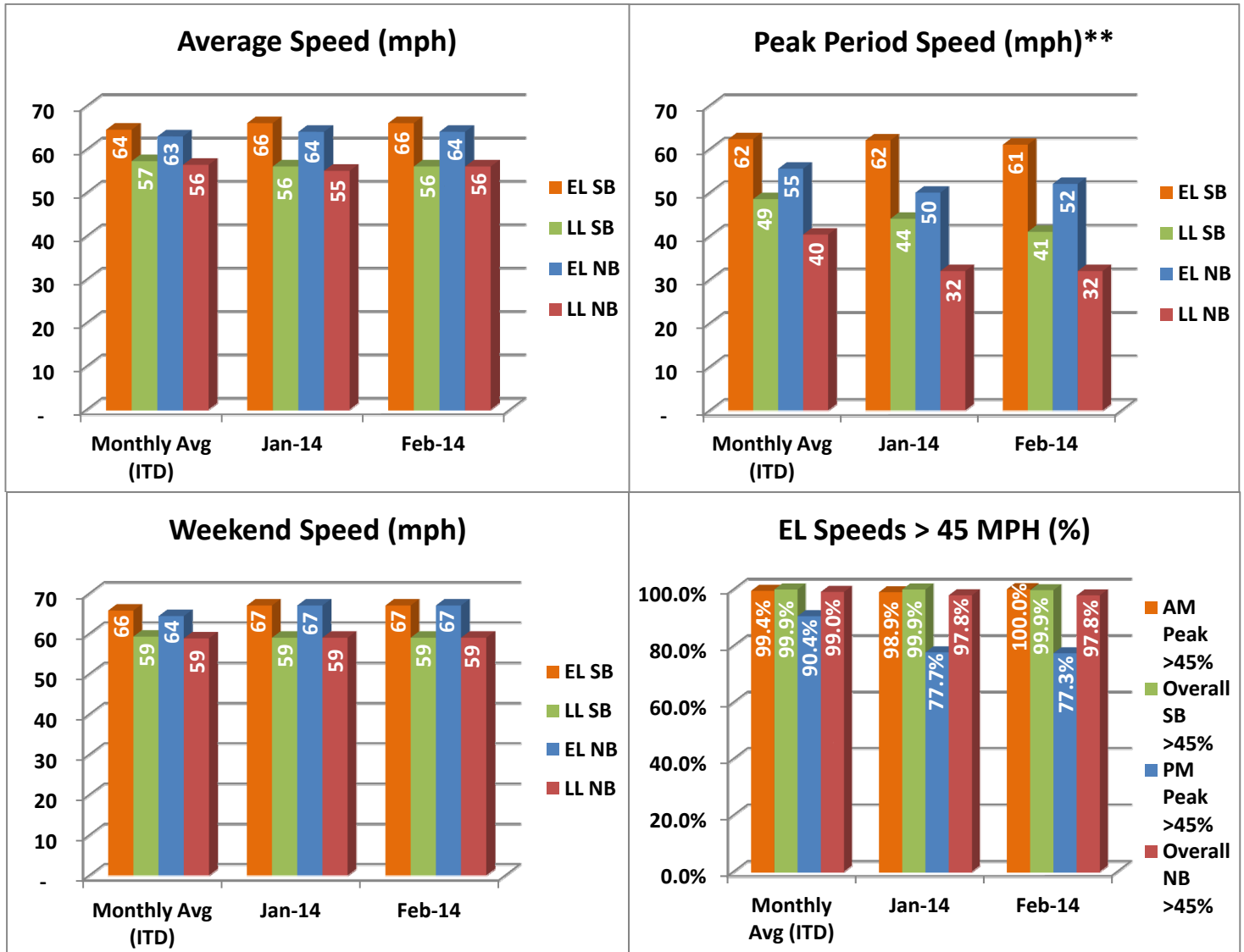
In total, the 95 Express Lanes:

- ✓ Serviced 1,920,737 vehicle trips in February 2014 (3.94M trips in 2014 to date), bringing the total since opening (February 5, 2008) to approximately 92.2 million trips.
- ✓ Had estimated monthly toll revenue of \$1.93 million in February 2014 (\$3.77M in 2014 to date), bringing the total revenue to date to approximately \$74.9 million.
- ✓ Increased to a total of 9,119 registered vehicles, resulting in 41,723 toll exempt trips.

<b>February 2014 Statistics</b>	<b>Southbound</b>		<b>Northbound</b>			
<b>Total Trips</b>	980,339		940,398			
<b>Exempt Trips</b>	21,128		20,595			
<b>Revenue</b>						
	\$978,805		\$946,556			
<b>Tolls</b>						
- Range	\$0.00 - \$7.00		\$0.00 - \$7.00			
- Avg. Weekday	\$1.40		\$1.45			
- Avg. Peak Period**	\$2.36		\$3.55			
- Avg. Weekend	\$0.40		\$0.31			
- Avg. Off Peak	\$1.04		\$0.71			
- 85 <sup>th</sup> Percentile Weekday	\$3.00		\$3.25			
<b>Volume (veh)</b>						
	<b>EL</b>	<b>LL</b>	<b>EL</b>	<b>LL</b>		
- Avg. Weekday	38,428	107,007	36,922	103,738		
- Avg. Peak Period**	10,334	17,816	9,663	17,647		
<b>Speed (mph)</b>						
	<b>EL</b>	<b>LL</b>	<b>Δ</b>	<b>EL</b>	<b>LL</b>	<b>Δ</b>
- Avg. Overall	66	56	10	64	56	8
- Avg. Peak Period**	61	41	20	52	32	20
<b>Operated Above 45 MPH</b>						
	99.6%		97.8%			
<b>Remained Open to Motorists</b>						
	92.6%		91.9%			
<b>Closed due to Planned Construction</b>						
	4.5%		4.9%			
<b>Closed due to Non-recurring Events</b>						
	2.9%		3.2%			
<small>EL (Express Lanes); LL (Local Lanes)            **Peak Period is defined as 6-9 AM (southbound) and 4-7 PM (northbound).</small>						

## Operations/Traffic Statistics - Speed Data

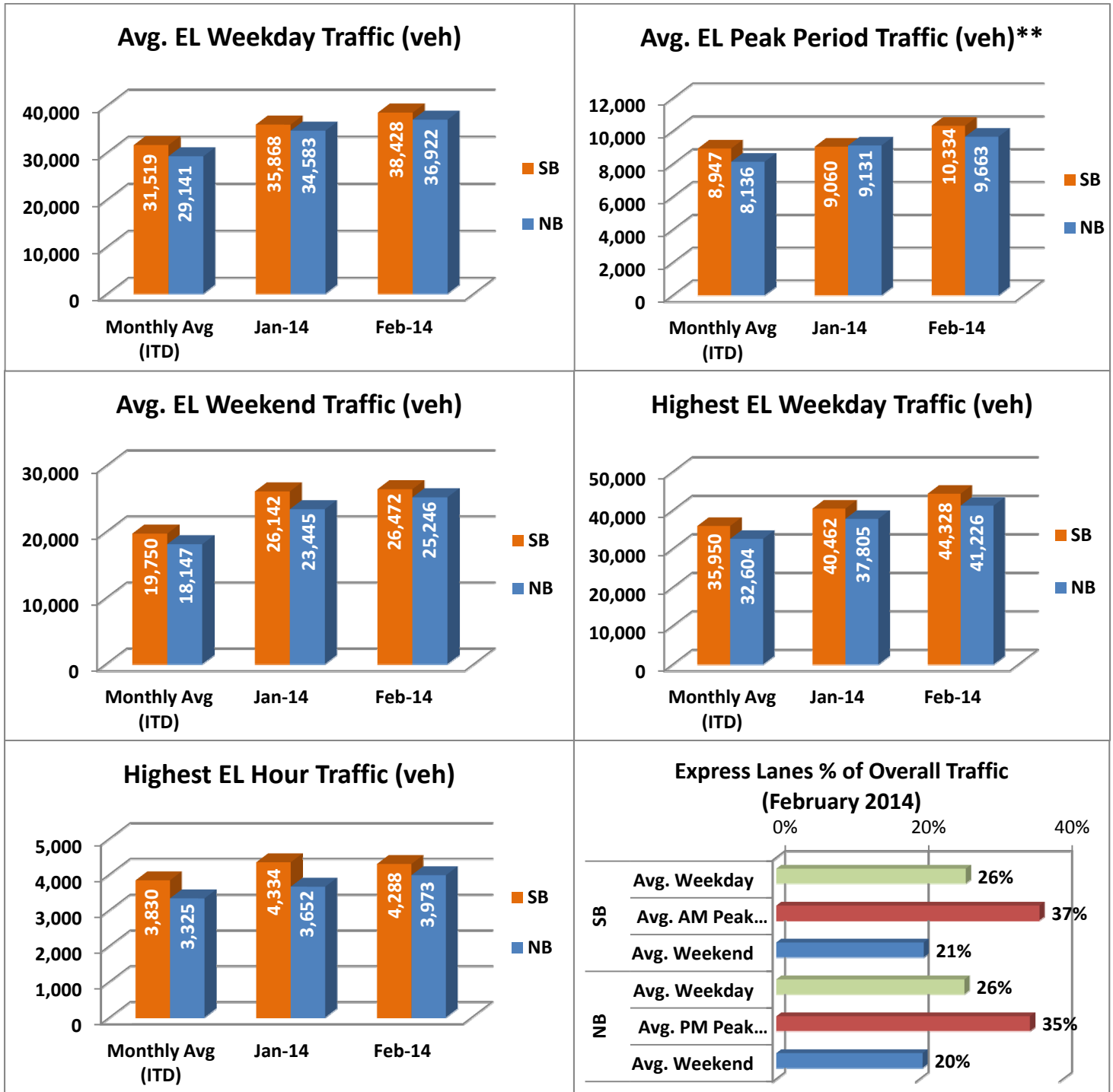
\*\* Peak Period is defined as 6-9 AM (southbound) and 4-7 PM (northbound).



NOTE: ITD = Inception to Date

## Operations/Traffic Statistics - Volume Data

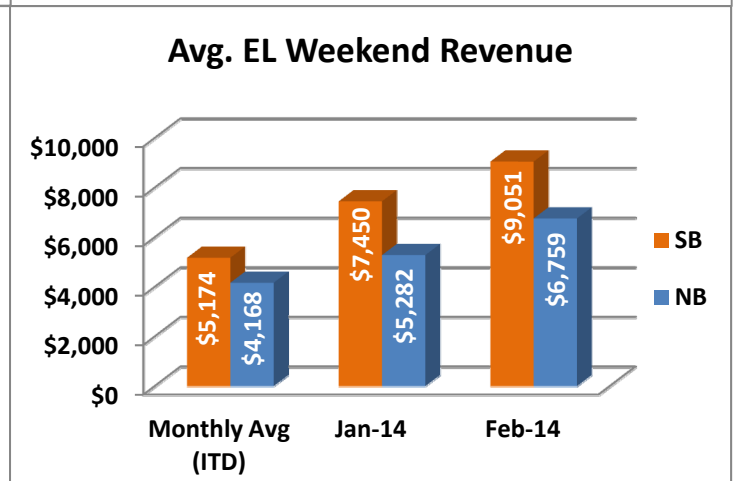
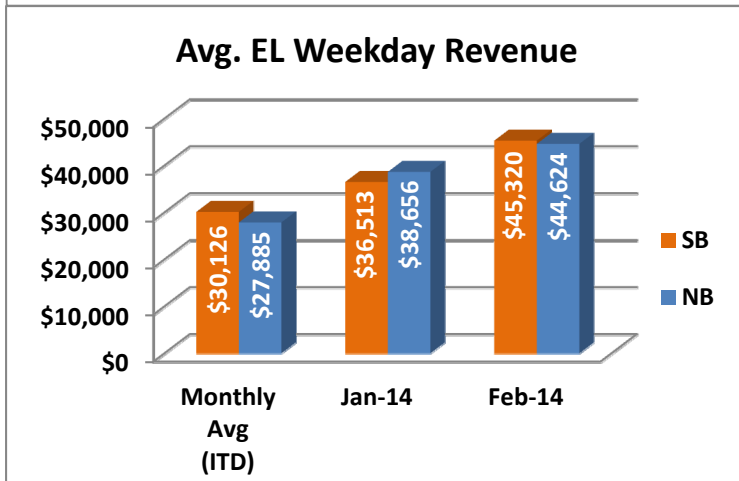
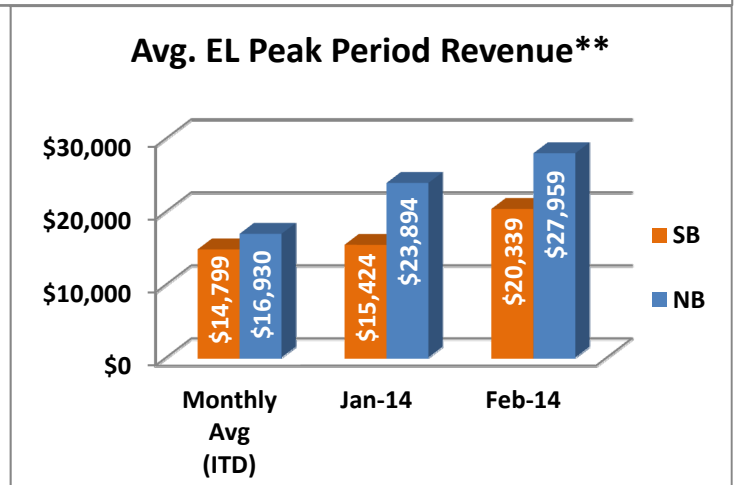
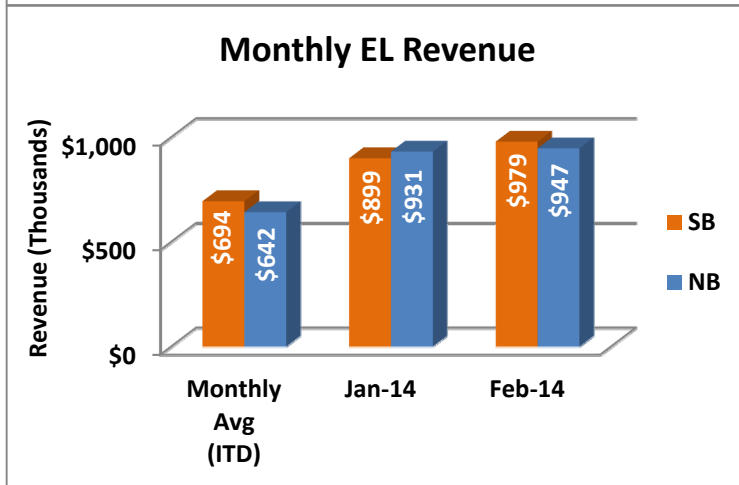
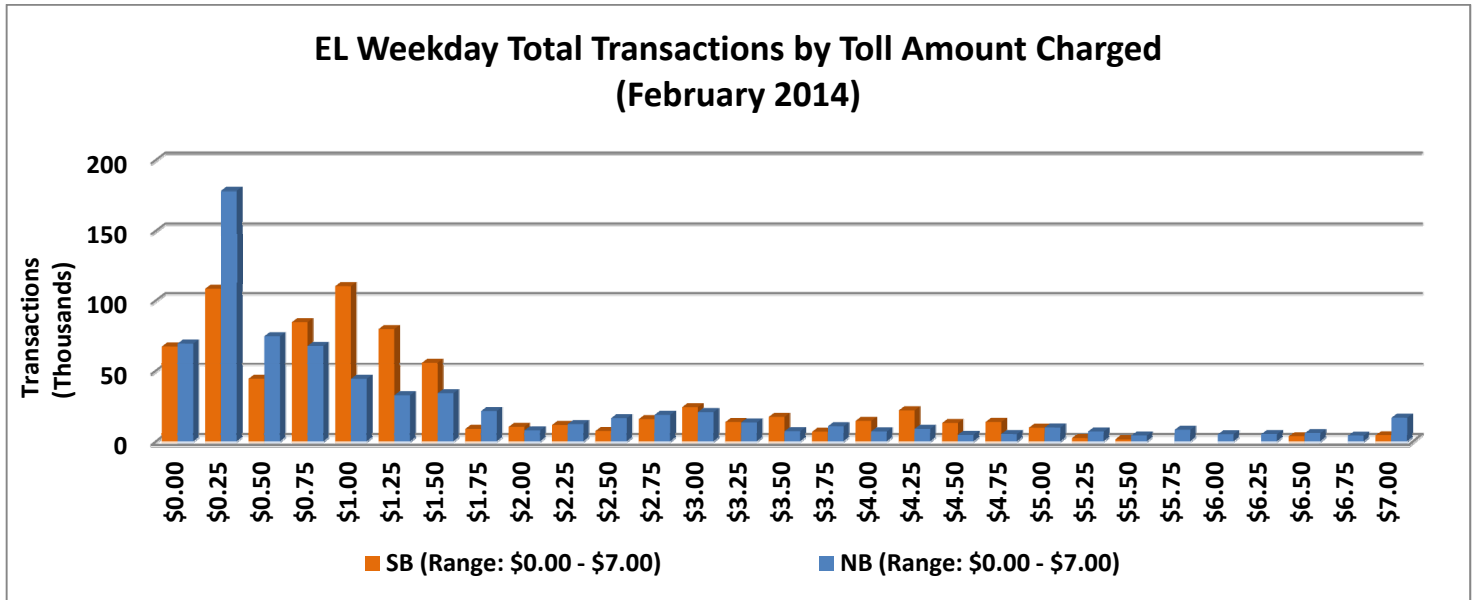
\*\* Peak Period is defined as 6-9 AM (southbound) and 4-7 PM (northbound).



NOTE: ITD = Inception to Date

## Revenue/Tolls Statistics

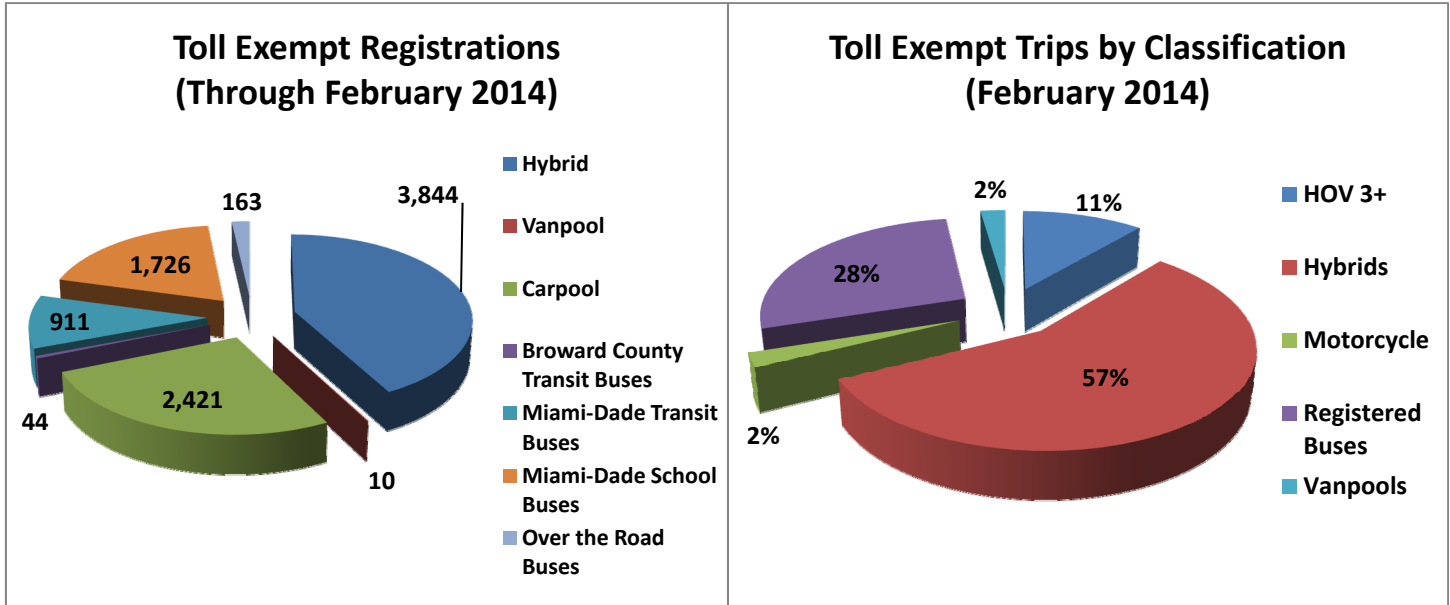
\*\* Peak Period is defined as 6-9 AM (southbound) and 4-7 PM (northbound).



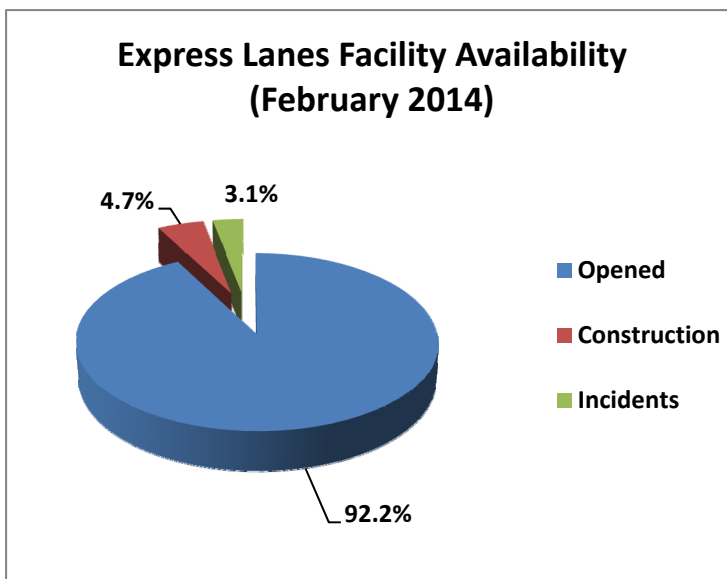
NOTE: ITD = Inception to Date

## Registrations—Toll Exempt Trips

The total registrations through February 2014 increased to 9,119. The 41,723 Toll Exempt Trips for this month are shown by classification below.



## Facility Availability



The entire 95 Express lanes (both directions) were open to motorists 92.2% of the time, while closed 4.7% due to 17 planned construction/maintenance events (each lasting approximately 3 hours, 43 minutes in duration, on average) and 3.1% due to 156 non-recurring events (each lasting approximately 16 minutes in duration, on average).