

95 Express Monthly Operations Report – February 2016

General

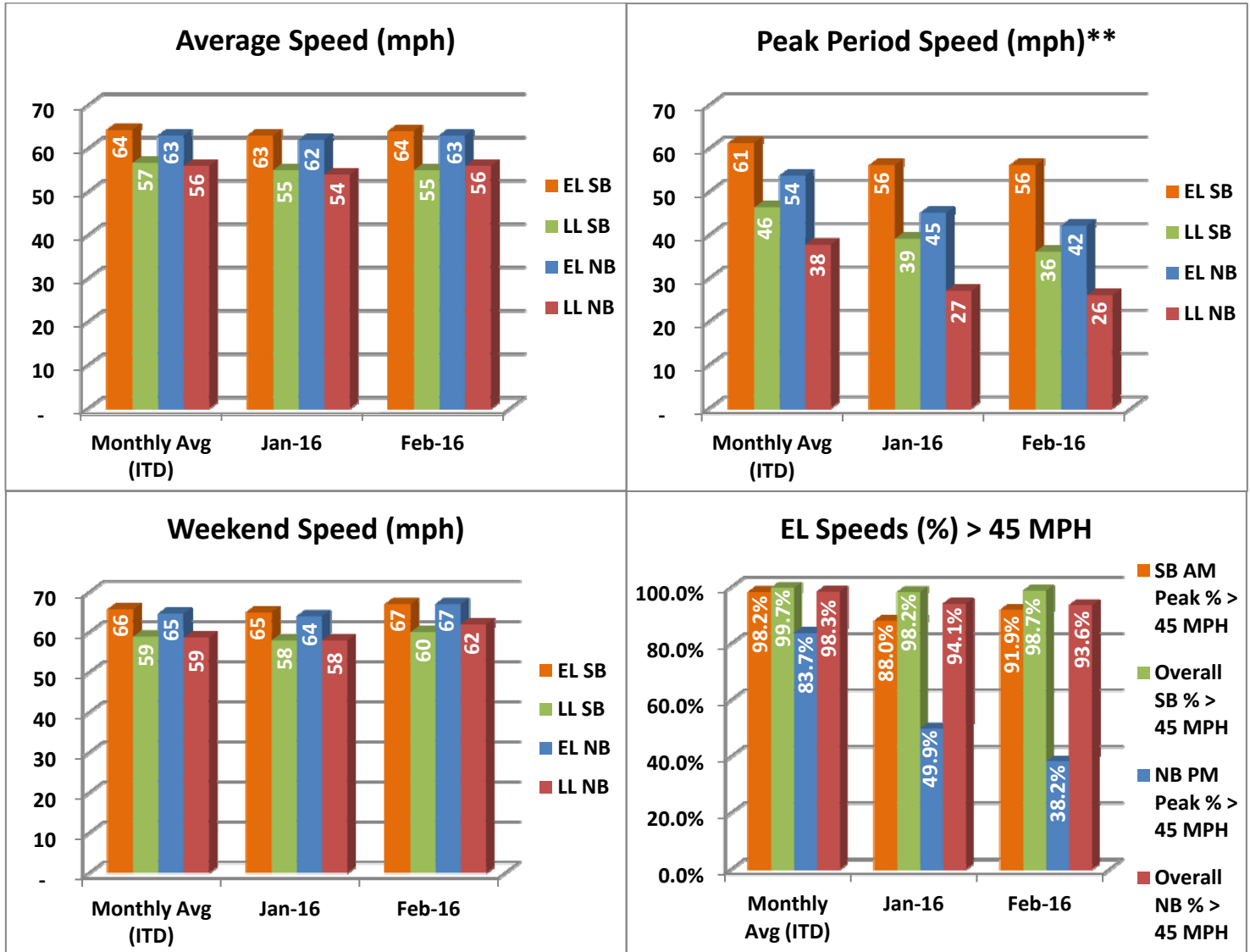
In total, the 95 Express Lanes:

- ✓ Serviced 1,849,374 vehicle trips in February 2016 (3.65 million trips in 2016 to date), bringing the total since opening (December 5, 2008) to approximately 134.5 million trips.
- ✓ Had estimated monthly toll revenue of \$2.67 million in February 2016 (\$5.51 million in 2016 to date), bringing the total revenue since opening to date to approximately \$130.0 million.
- ✓ Increased to a total of 9,395 registered vehicles, resulting in 63,750 toll exempt trips.

<u>February 2016 Statistics</u>	<u>Southbound</u>			<u>Northbound</u>		
Total Trips	959,401			889,973		
Exempt Trips	31,745			32,005		
Revenue						
	\$775,719			\$1,890,060		
Tolls						
- Range	\$0.00 - \$8.50			\$0.00 - \$10.50		
- Avg. Weekday	\$1.06			\$2.96		
- Avg. Peak Period**	\$1.50			\$7.63		
- Avg. Weekend	\$0.57			\$0.77		
- Avg. Off Peak	\$1.01			\$1.81		
- 85 th Percentile	\$1.00			\$8.25		
Volume (veh)						
	EL	LL		EL	LL	
- Avg. Weekday	35,566	103,479		32,616	100,984	
- Avg. Peak Period**	9,305	16,189		7,316	15,862	
Speed (mph)						
	EL	LL	Δ	EL	LL	Δ
- Avg. Overall	64	55	9	63	56	7
- Avg. Peak Period**	56	36	20	42	26	16
Operated Above 45 MPH						
	98.7%			93.6%		
Remained Open to Motorists						
	90.5%			88.4%		
Closed due to Planned Construction						
	6.8%			7.7%		
Closed due to Non-recurring Events						
	2.7%			3.9%		
<i>EL (Express Lanes); LL (Local Lanes); **Peak Period is defined as 6-9 AM (southbound) and 4-7 PM (northbound).</i>						

Operations/Traffic Statistics - Speed Data

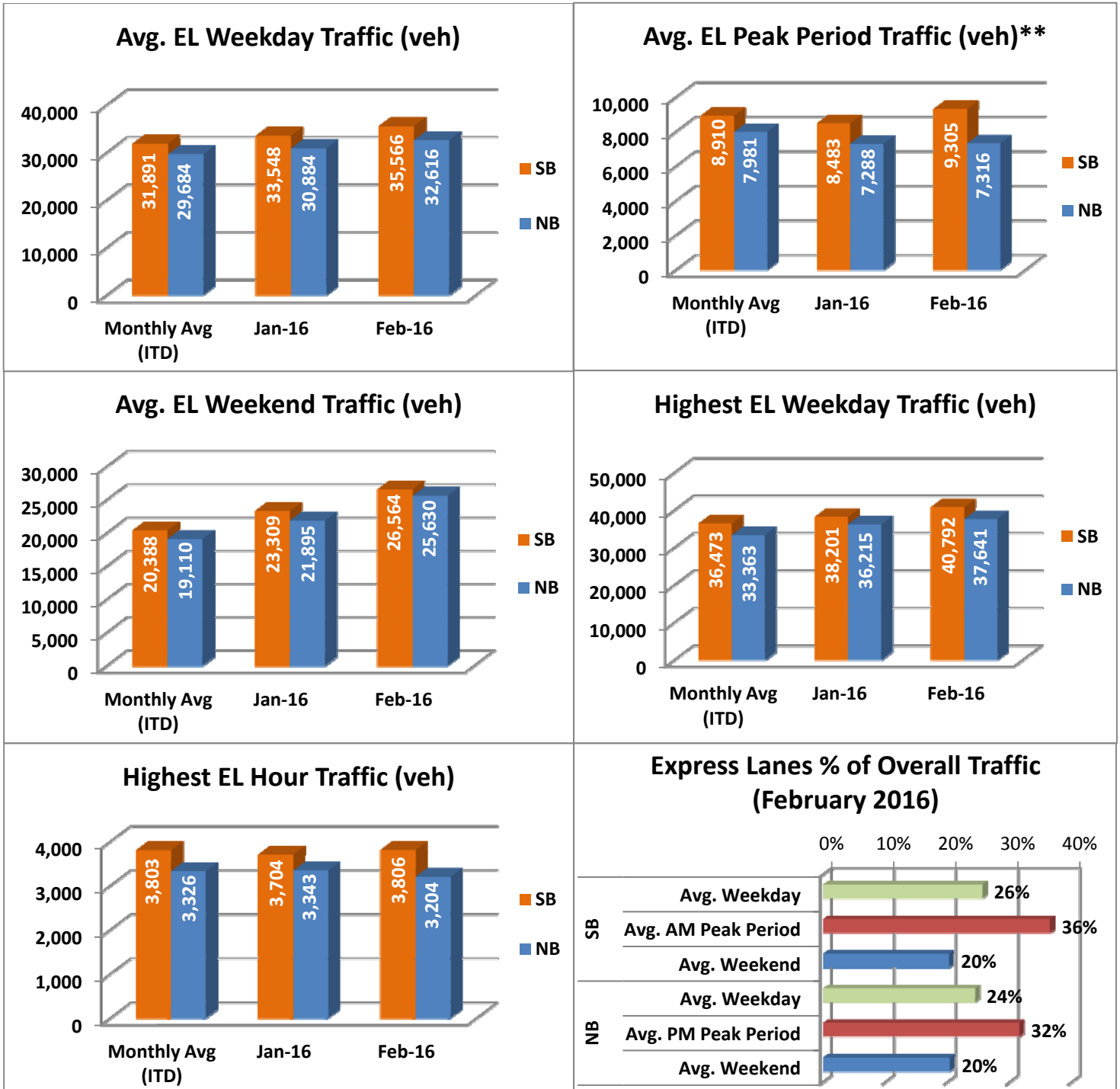
** Peak Period is defined as 6-9 AM (southbound) and 4-7 PM (northbound).



NOTE: ITD = Inception to Date; EL = Express Lanes; LL = Local Lanes

Operations/Traffic Statistics - Volume Data

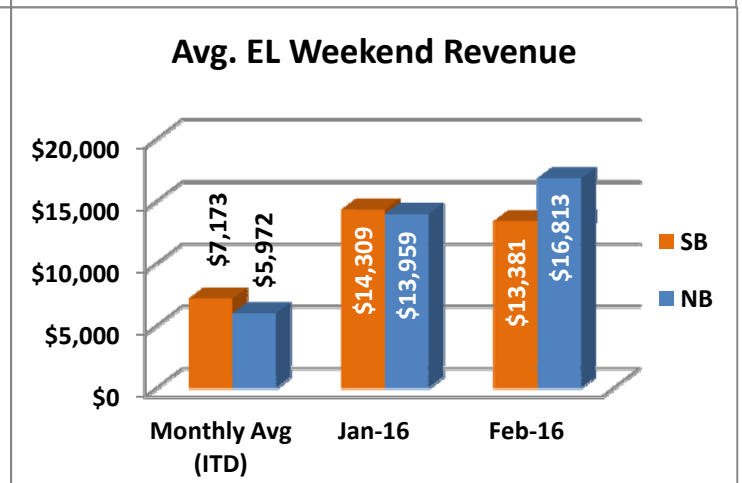
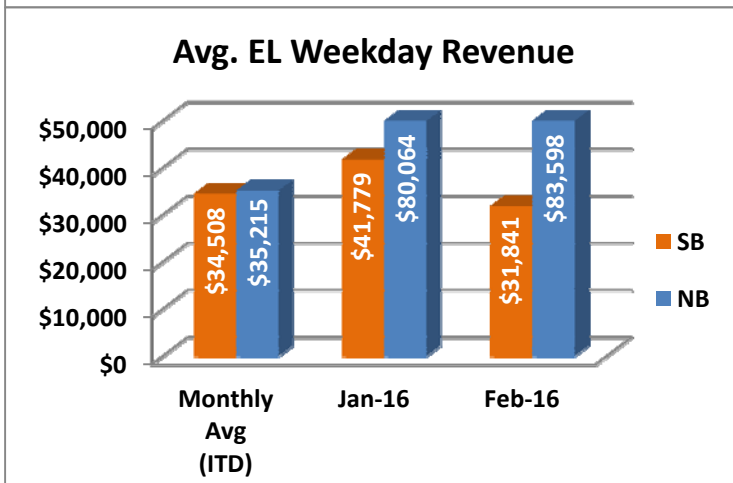
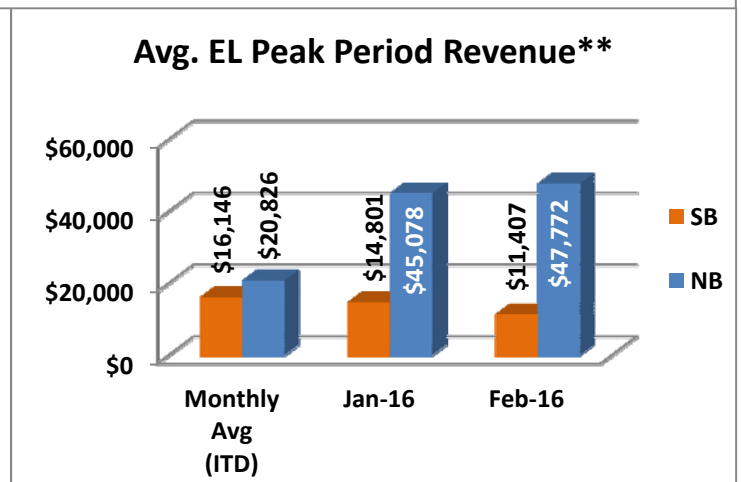
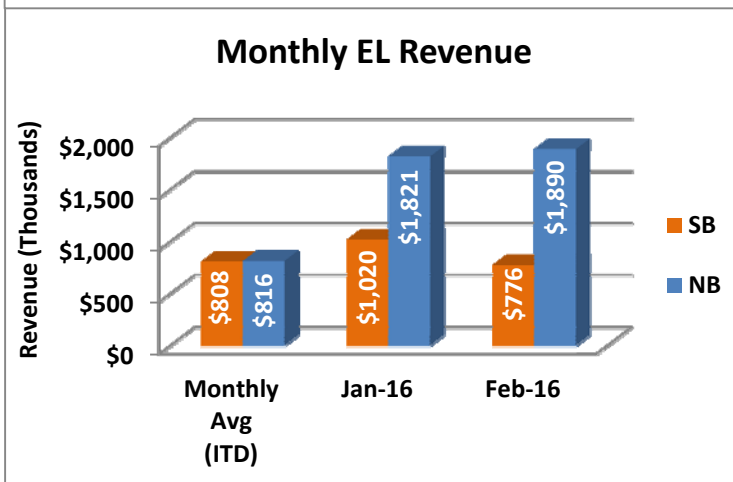
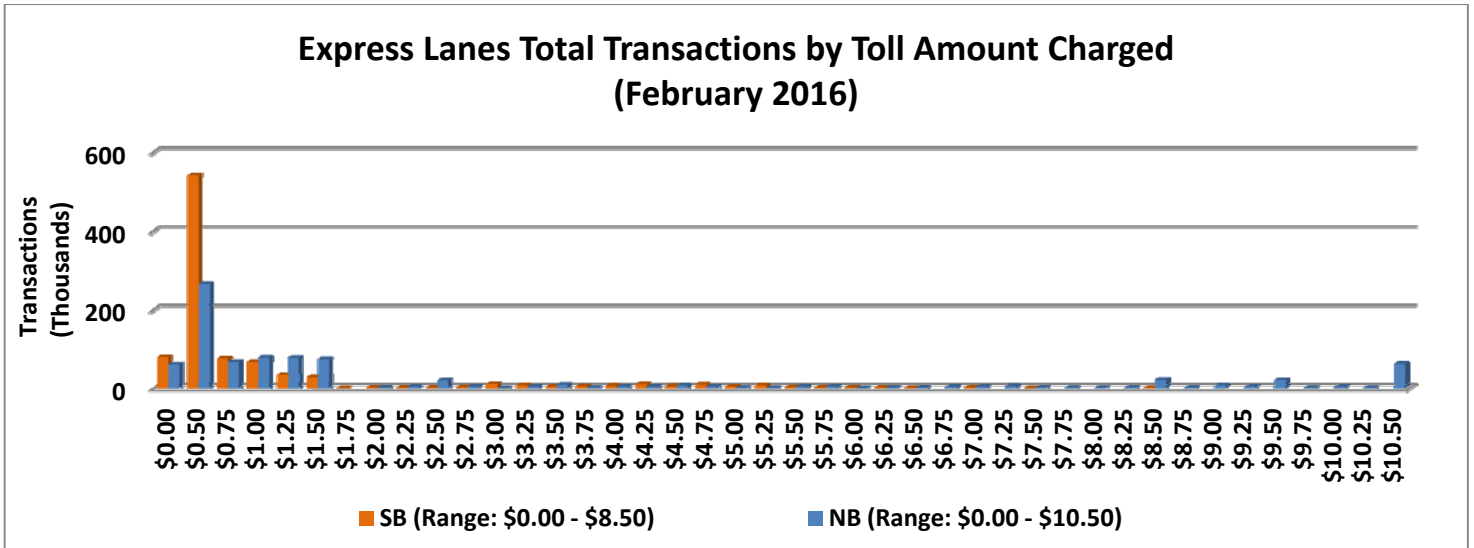
** Peak Period is defined as 6-9 AM (southbound) and 4-7 PM (northbound).



NOTE: ITD = Inception to Date

Revenue/Tolls Statistics

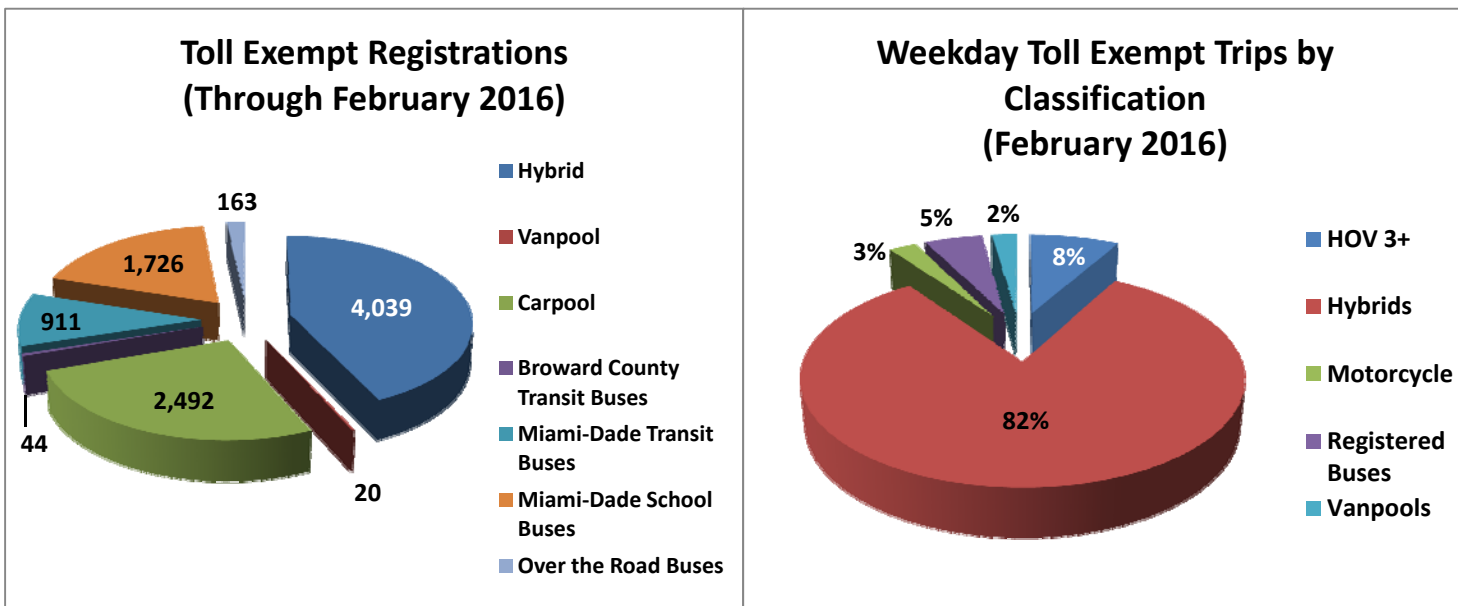
** Peak Period is defined as 6-9 AM (southbound) and 4-7 PM (northbound).



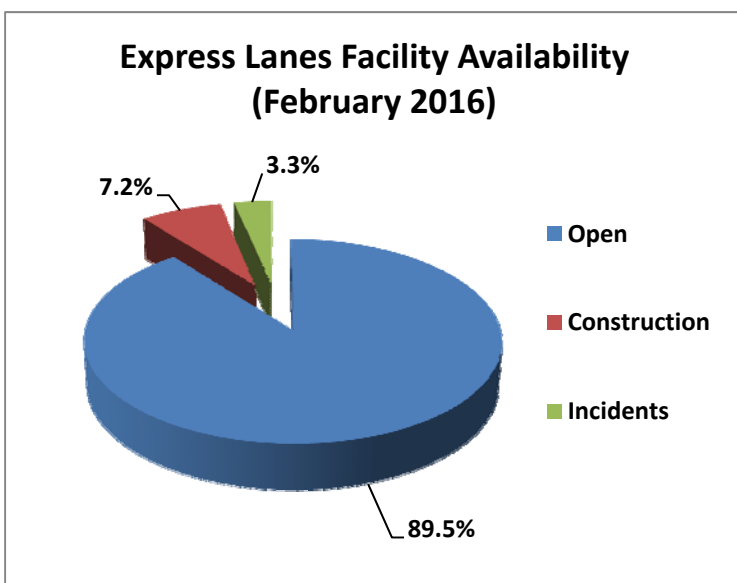
NOTE: ITD = Inception to Date

Registrations—Toll Exempt Trips

The total registrations through February 2016 increased to 9,395. The Weekday Toll Exempt Trips for this month are shown by classification below.



Facility Availability



The entire 95 Express lanes (both directions) were open to motorists 89.5% of the time, while closed 7.2% due to 21 planned construction/ maintenance events (each lasting approximately 4 hours, 48 minutes in duration, on average) and 3.3% due to 96 non-recurring events (each lasting approximately 29 minutes in duration, on average).