

## 95 Express Monthly Operations Report – June 2014

### General

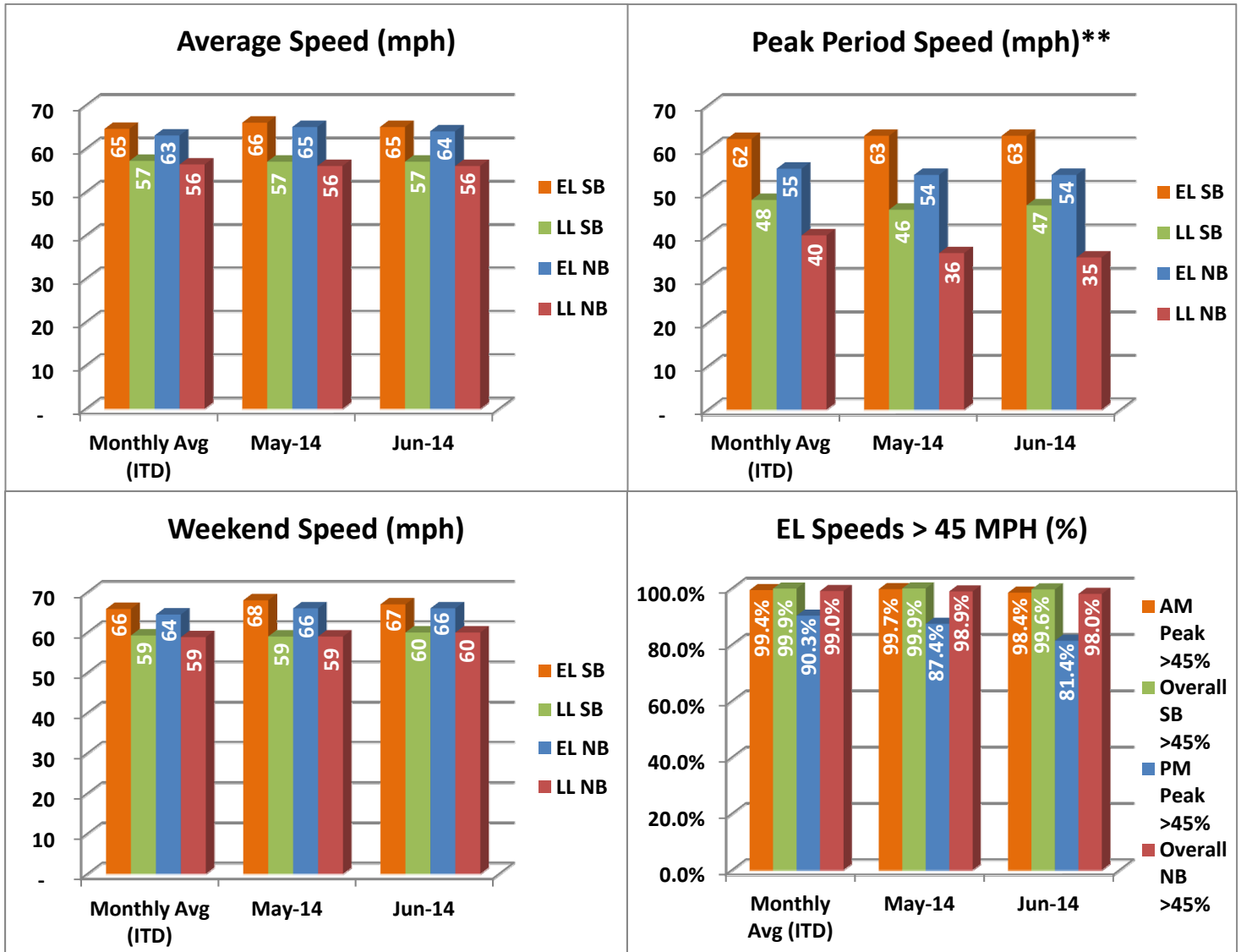
In total, the 95 Express Lanes:

- ✓ Serviced 1,594,951 vehicle trips in June 2014 (10.98M trips in 2014 to date), bringing the total since opening (June 5, 2008) to approximately 99.3 million trips.
- ✓ Had estimated monthly toll revenue of \$1.68 million in June 2014 (\$11.6M in 2014 to date), bringing the total revenue to date to approximately \$82.7 million.
- ✓ Increased to a total of 9,116 registered vehicles, resulting in 51,044 toll exempt trips.

<u>June 2014 Statistics</u>	<u>Southbound</u>		<u>Northbound</u>			
<b>Total Trips</b>	791,382		803,569			
<b>Exempt Trips</b>	23,304		27,740			
<b>Revenue</b>						
	\$796,795		\$879,287			
<b>Tolls</b>						
- Range***	\$0.00 - \$10.50		\$0.00 - \$10.50			
- Avg. Weekday	\$1.38		\$1.40			
- Avg. Peak Period**	\$2.17		\$2.91			
- Avg. Weekend	\$0.49		\$0.48			
- Avg. Off Peak	\$1.08		\$0.91			
- 85 <sup>th</sup> Percentile Weekday	\$2.75		\$2.75			
<b>Volume (veh)</b>						
	<b>EL</b>	<b>LL</b>	<b>EL</b>	<b>LL</b>		
- Avg. Weekday	30,535	103,742	30,333	99,692		
- Avg. Peak Period**	8,988	18,569	7,997	17,726		
<b>Speed (mph)</b>						
	<b>EL</b>	<b>LL</b>	<b>Δ</b>	<b>EL</b>	<b>LL</b>	<b>Δ</b>
- Avg. Overall	65	57	8	64	56	8
- Avg. Peak Period**	63	47	16	54	35	19
<b>Operated Above 45 MPH</b>						
	99.6%		98.0%			
<b>Remained Open to Motorists</b>						
	72.8%		92.9%			
<b>Closed due to Planned Construction</b>						
	22.1%		2.9%			
<b>Closed due to Non-recurring Events</b>						
	3.5%		4.2%			
<i>EL (Express Lanes); LL (Local Lanes)</i> **Peak Period is defined as 6-9 AM (southbound) and 4-7 PM (northbound). ***Maximum Toll Increase started in March 2014; from \$1.00 per mile, maximum, to \$1.50 per mile.						

## Operations/Traffic Statistics - Speed Data

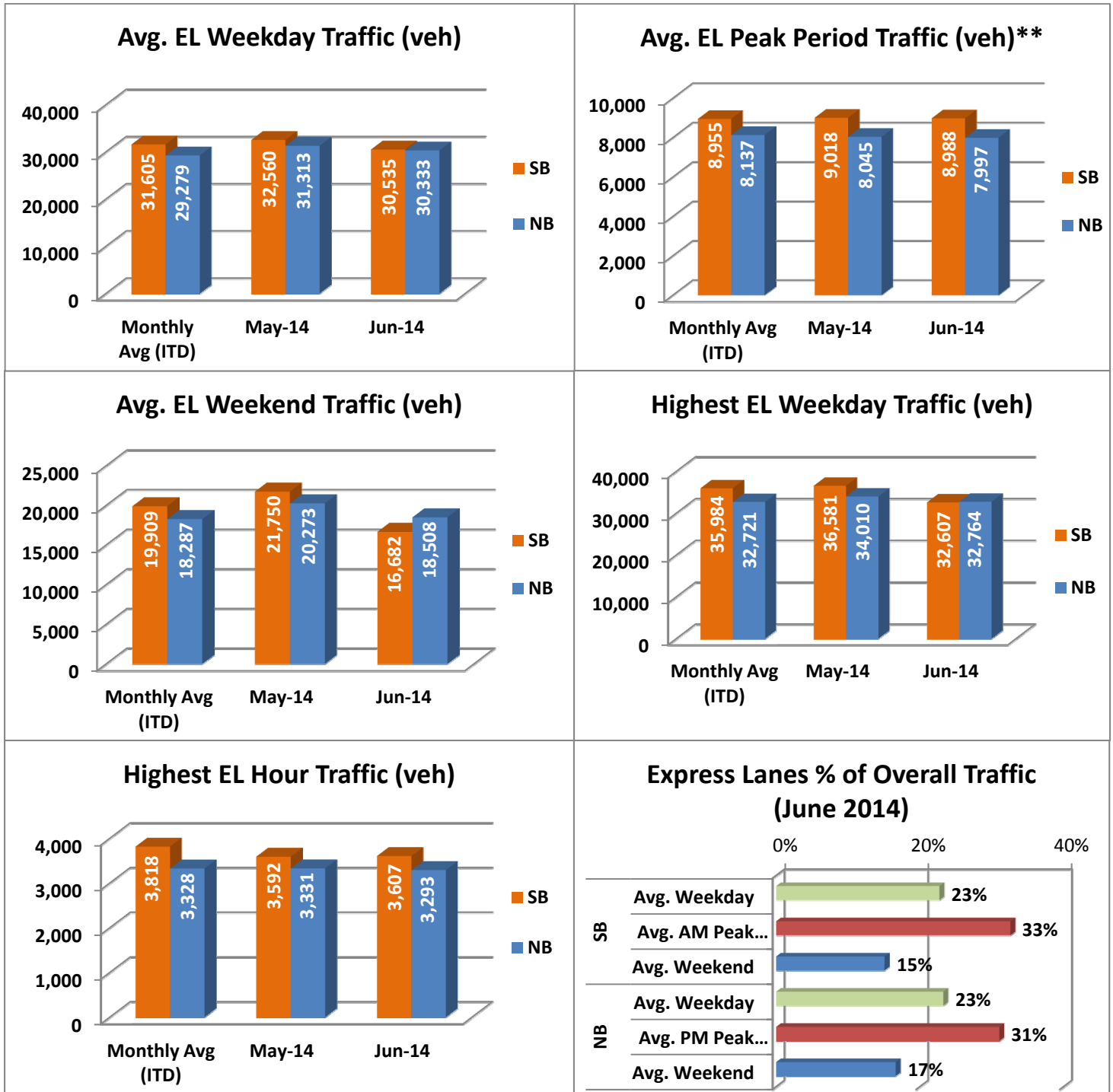
\*\* Peak Period is defined as 6-9 AM (southbound) and 4-7 PM (northbound).



NOTE: ITD = Inception to Date

## Operations/Traffic Statistics - Volume Data

\*\* Peak Period is defined as 6-9 AM (southbound) and 4-7 PM (northbound).

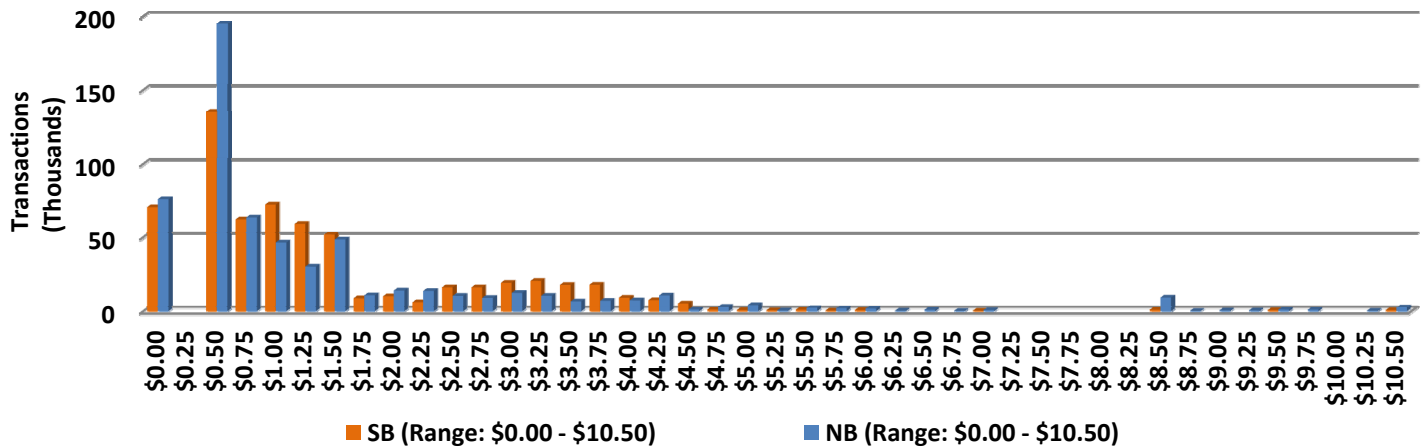


NOTE: ITD = Inception to Date

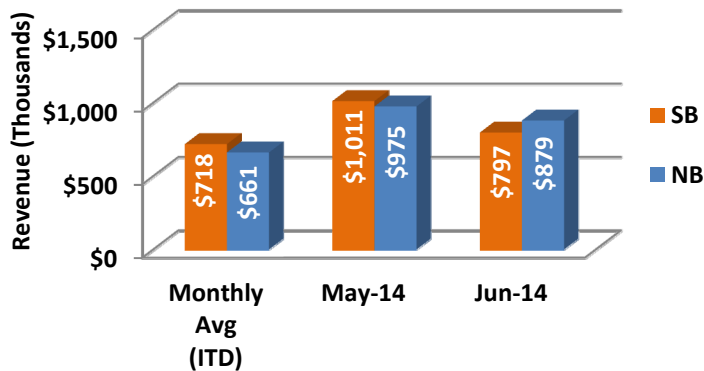
## Revenue/Tolls Statistics

\*\* Peak Period is defined as 6-9 AM (southbound) and 4-7 PM (northbound). Maximum toll increase started March 2014; from \$1.00 per mile, maximum, to \$1.50 per mile.

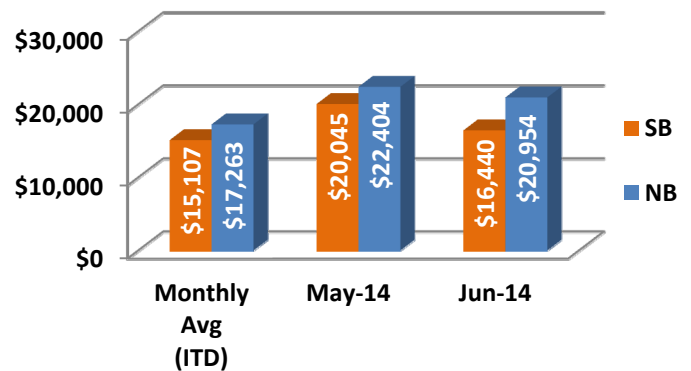
**EL Weekday Total Transactions by Toll Amount Charged (June 2014)**



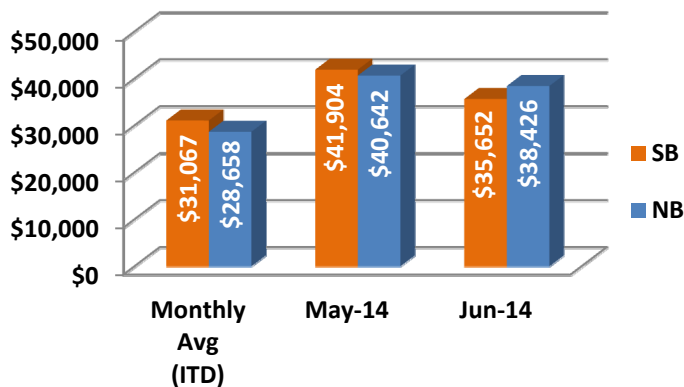
**Monthly EL Revenue**



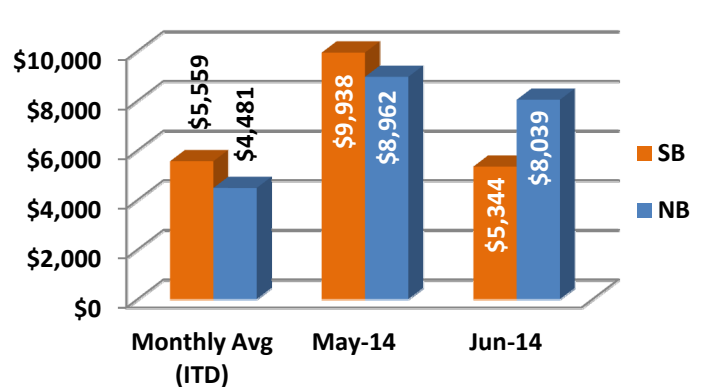
**Avg. EL Peak Period Revenue\*\***



**Avg. EL Weekday Revenue**



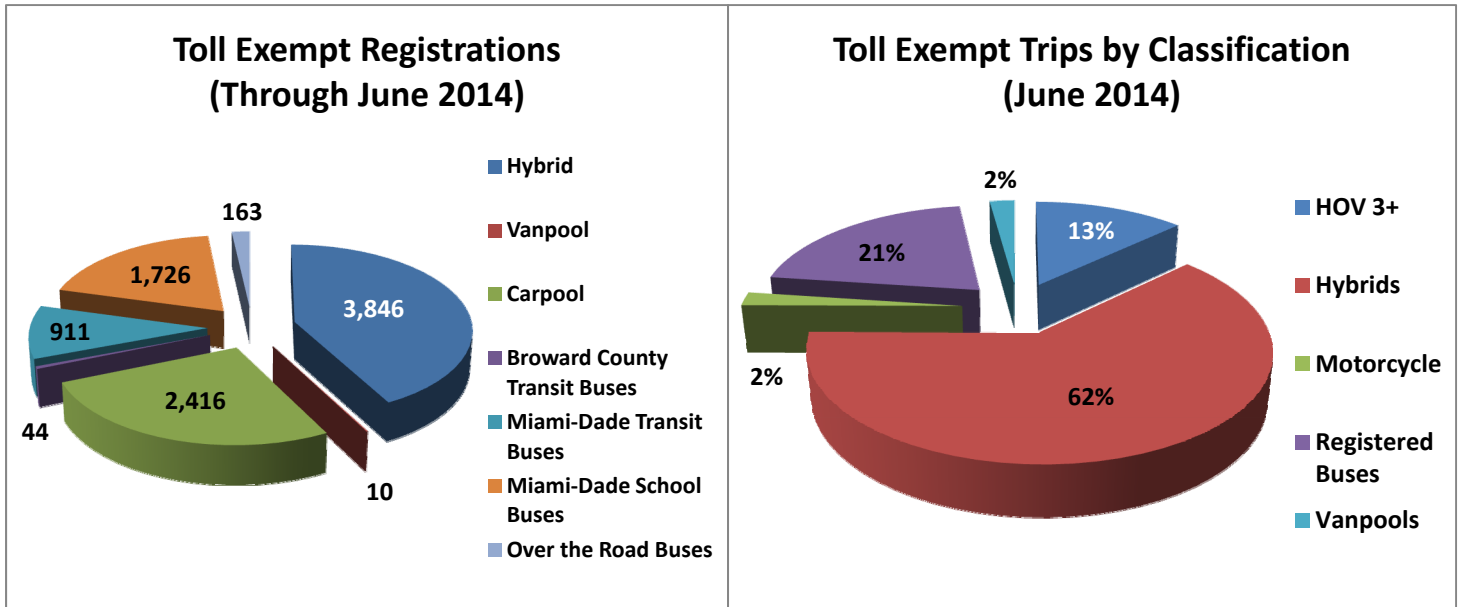
**Avg. EL Weekend Revenue**



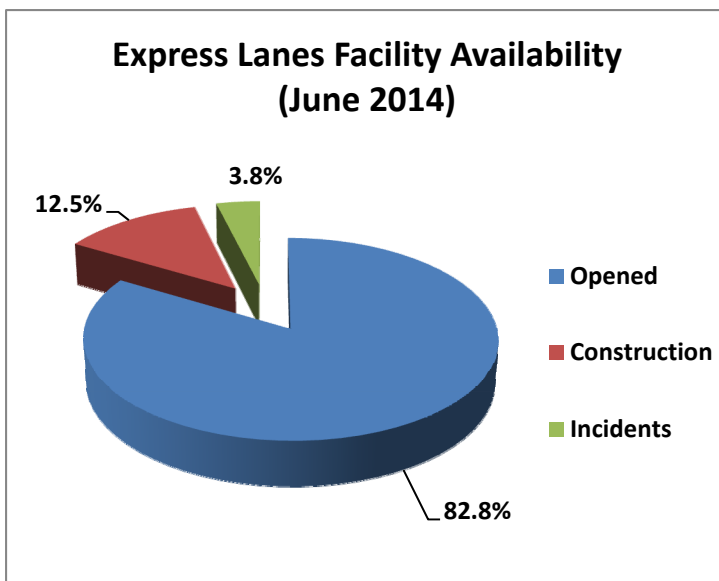
NOTE: ITD = Inception to Date

## Registrations—Toll Exempt Trips

The total registrations through June 2014 increased to 9,116. The 51,044 Toll Exempt Trips for this month are shown by classification below.



## Facility Availability



The entire 95 Express lanes (both directions) were open to motorists 82.8% of the time, while closed 12.5% due to 31 planned construction/maintenance events (each lasting approximately 5 hours, 49 minutes in duration, on average) and 3.8% due to 182 non-recurring events (each lasting approximately 18 minutes in duration, on average).