

95 Express Monthly Operations Report – May 2014

General

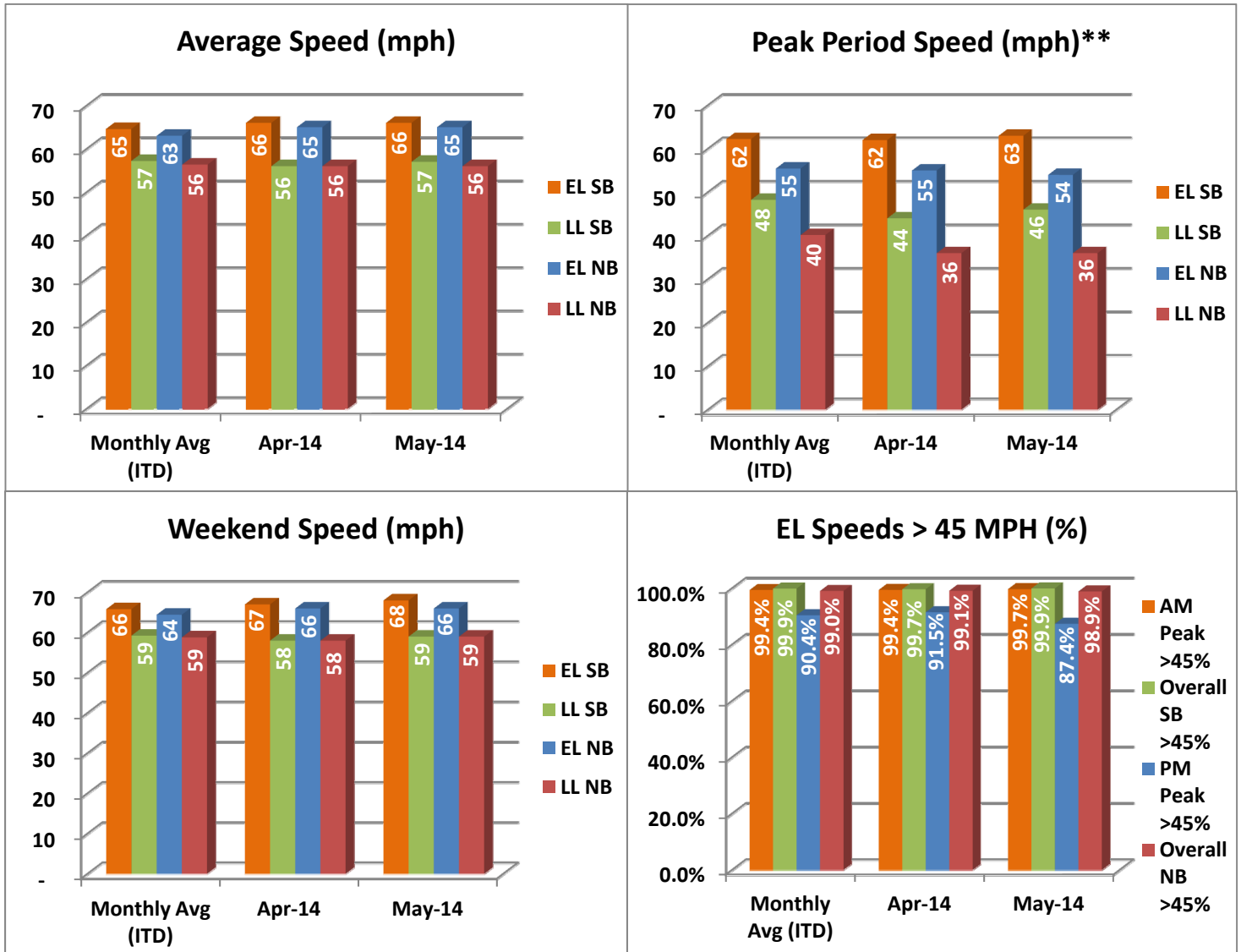
In total, the 95 Express Lanes:

- ✓ Serviced 1,783,415 vehicle trips in May 2014 (9.39M trips in 2014 to date), bringing the total since opening (May 5, 2008) to approximately 97.7 million trips.
- ✓ Had estimated monthly toll revenue of \$1.99 million in May 2014 (\$9.91M in 2014 to date), bringing the total revenue to date to approximately \$81.1 million.
- ✓ Increased to a total of 9,114 registered vehicles, resulting in 58,875 toll exempt trips.

<u>May 2014 Statistics</u>	<u>Southbound</u>		<u>Northbound</u>			
Total Trips	912,069		871,346			
Exempt Trips	30,194		28,681			
Revenue						
	\$1,011,336		\$974,778			
Tolls						
- Range***	\$0.00 - \$9.50		\$0.00 - \$10.50			
- Avg. Weekday	\$1.45		\$1.43			
- Avg. Peak Period**	\$2.50		\$3.09			
- Avg. Weekend	\$0.53		\$0.49			
- Avg. Off Peak	\$1.04		\$0.89			
- 85 th Percentile Weekday	\$3.00		\$2.50			
Volume (veh)						
	EL	LL	EL	LL		
- Avg. Weekday	32,560	105,230	31,313	103,185		
- Avg. Peak Period**	9,018	18,533	8,045	18,055		
Speed (mph)						
	EL	LL	Δ	EL	LL	Δ
- Avg. Overall	66	57	9	65	56	9
- Avg. Peak Period**	63	46	17	54	36	18
Operated Above 45 MPH						
	99.9%		98.9%			
Remained Open to Motorists						
	92.7%		94.2%			
Closed due to Planned Construction						
	4.4%		2.2%			
Closed due to Non-recurring Events						
	2.8%		3.6%			
<i>EL (Express Lanes); LL (Local Lanes)</i> <i>**Peak Period is defined as 6-9 AM (southbound) and 4-7 PM (northbound).</i> <i>***Maximum Toll Increase started in March 2014; from \$1.00 per mile, maximum, to \$1.50 per mile.</i>						

Operations/Traffic Statistics - Speed Data

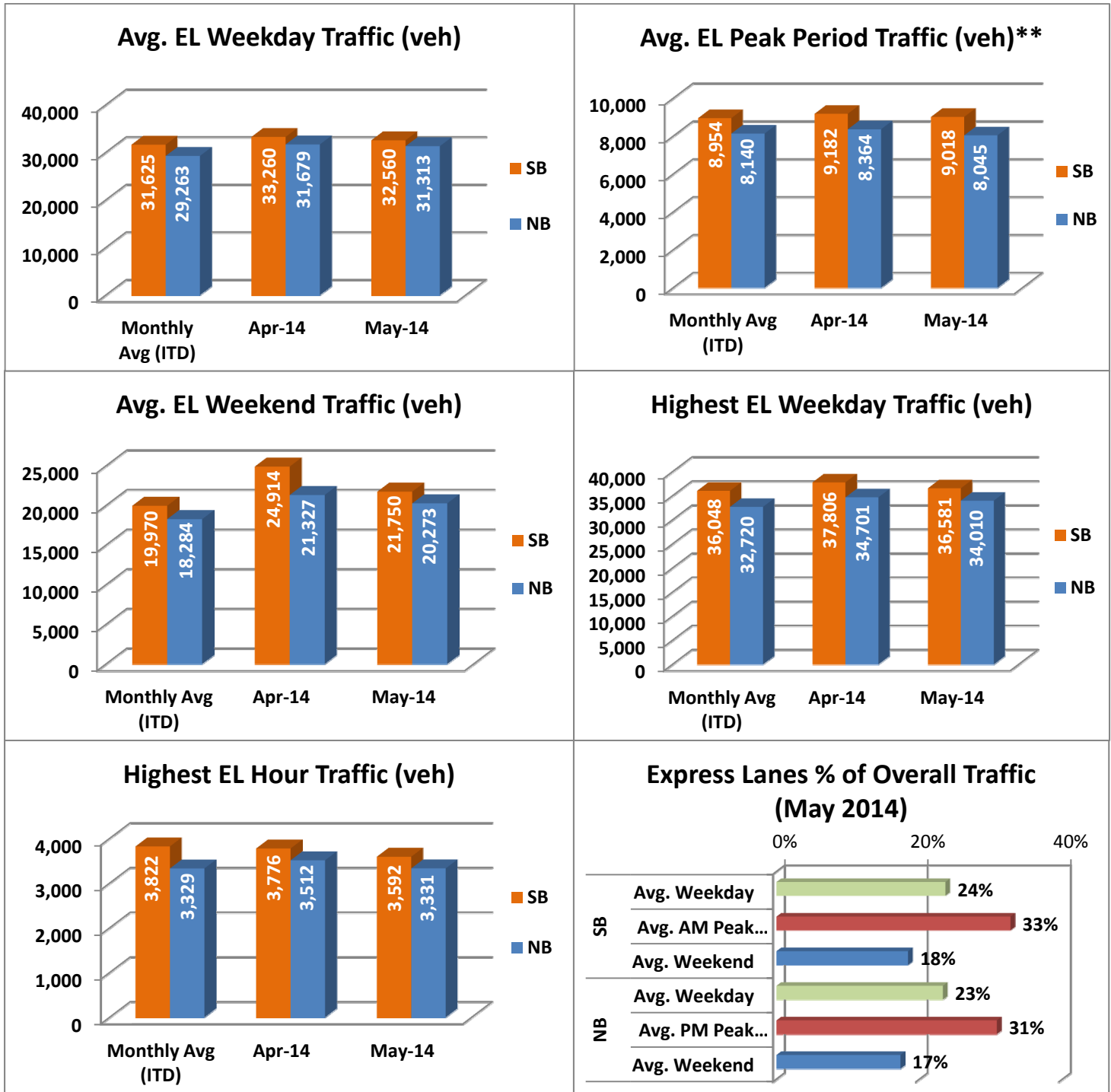
** Peak Period is defined as 6-9 AM (southbound) and 4-7 PM (northbound).



NOTE: ITD = Inception to Date

Operations/Traffic Statistics - Volume Data

** Peak Period is defined as 6-9 AM (southbound) and 4-7 PM (northbound).

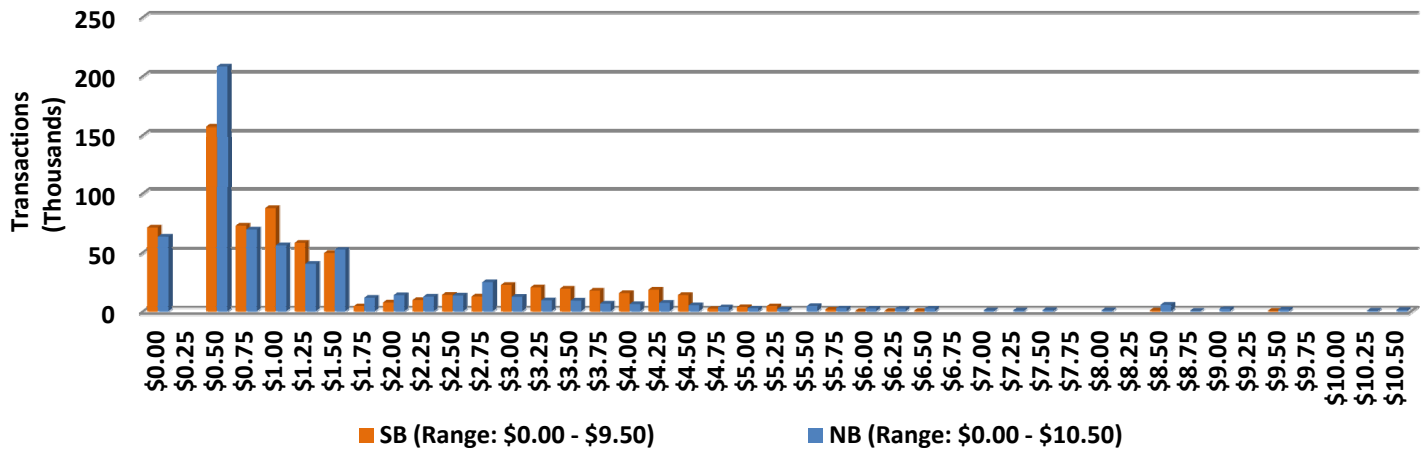


NOTE: ITD = Inception to Date

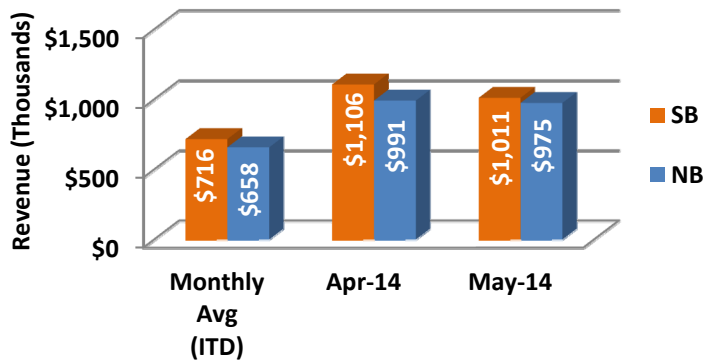
Revenue/Tolls Statistics

** Peak Period is defined as 6-9 AM (southbound) and 4-7 PM (northbound). Maximum toll increase started March 2014; from \$1.00 per mile, maximum, to \$1.50 per mile.

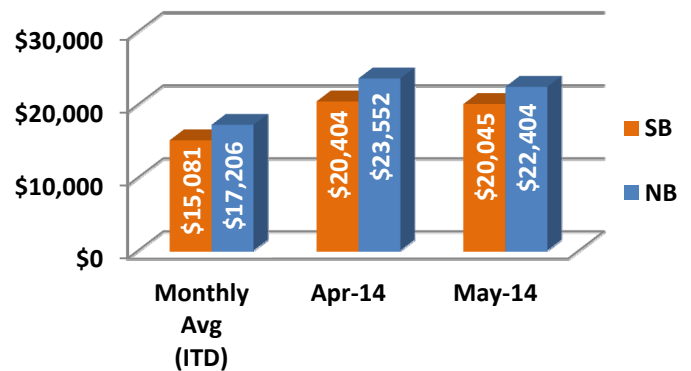
EL Weekday Total Transactions by Toll Amount Charged (May 2014)



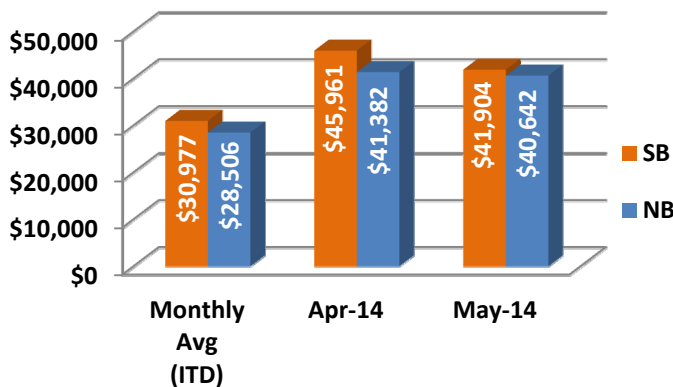
Monthly EL Revenue



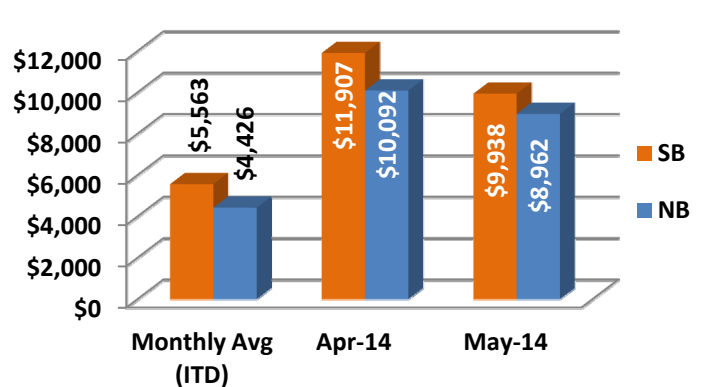
Avg. EL Peak Period Revenue**



Avg. EL Weekday Revenue



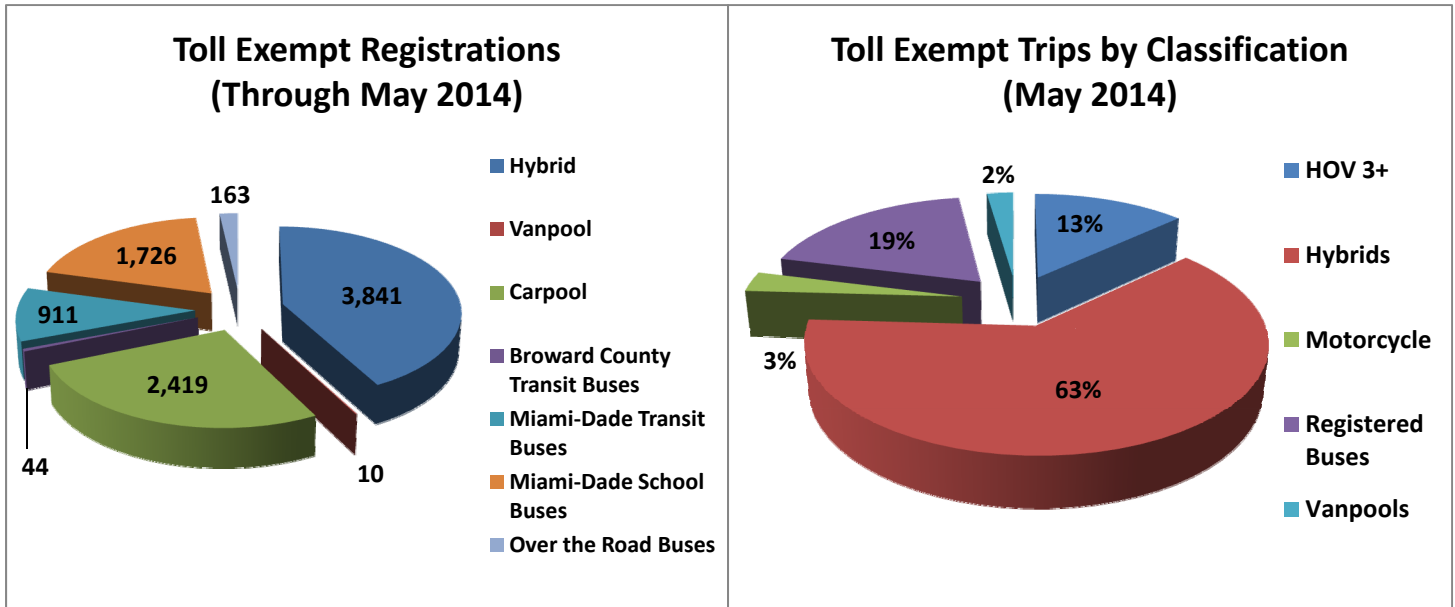
Avg. EL Weekend Revenue



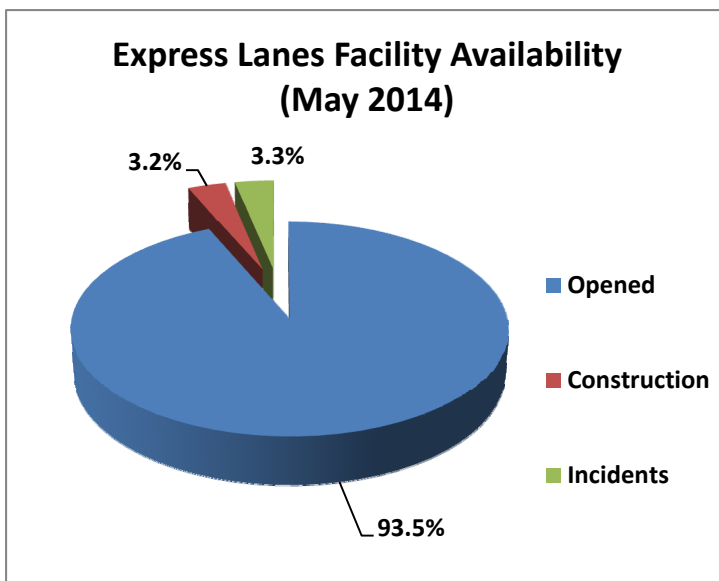
NOTE: ITD = Inception to Date

Registrations—Toll Exempt Trips

The total registrations through May 2014 increased to 9,114. The 58,875 Toll Exempt Trips for this month are shown by classification below.



Facility Availability



The entire 95 Express lanes (both directions) were open to motorists 93.5% of the time, while closed 3.2% due to 15 planned construction/maintenance events (each lasting approximately 3 hours, 18 minutes in duration, on average) and 3.3% due to 176 non-recurring events (each lasting approximately 16 minutes in duration, on average).