

95 Express Monthly Operations Report – November 2014

General

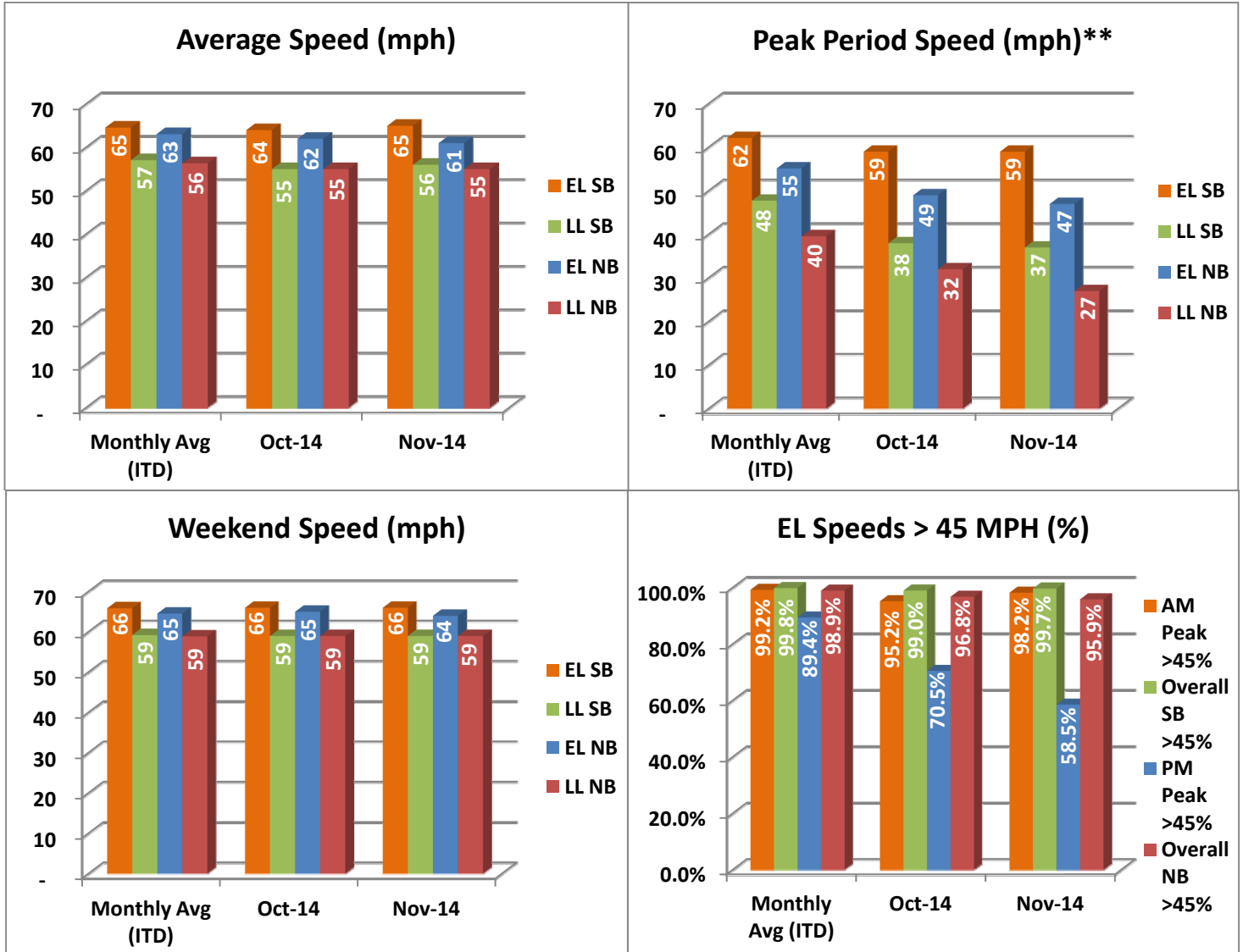
In total, the 95 Express Lanes:

- ✓ Serviced 1,611,161 vehicle trips in November 2014 (19.2M trips in 2014 to date), bringing the total since opening (December 5, 2008) to approximately 107.5 million trips.
- ✓ Had estimated monthly toll revenue of \$2.01 million in November 2014 (\$20.9M in 2014 to date), bringing the total revenue to date to approximately \$92.1 million.
- ✓ Increased to a total of 9,179 registered vehicles, resulting in 51,277 toll exempt trips.

<u>November 2014 Statistics</u>	<u>Southbound</u>		<u>Northbound</u>			
Total Trips	844,061		767,100			
Exempt Trips	26,509		24,768			
Revenue						
	\$967,262		\$1,046,470			
Tolls						
- Range***	\$0.00 - \$10.50		\$0.00 - \$10.50			
- Avg. Weekday	\$1.58		\$1.87			
- Avg. Peak Period**	\$2.84		\$4.04			
- Avg. Weekend	\$0.52		\$0.53			
- Avg. Off Peak	\$1.19		\$1.18			
- 85 th Percentile Weekday	\$3.00		\$3.25			
Volume (veh)						
	EL	LL	EL	LL		
- Avg. Weekday	31,647	100,967	28,925	99,271		
- Avg. Peak Period**	8,612	16,954	7,687	16,092		
Speed (mph)						
	EL	LL	Δ	EL	LL	Δ
- Avg. Overall	65	56	9	61	55	6
- Avg. Peak Period**	59	37	22	47	27	20
Operated Above 45 MPH						
	99.7%		95.9%			
Remained Open to Motorists						
	88.4%		72.0%			
Closed due to Planned Construction						
	7.5%		23.4%			
Closed due to Non-recurring Events						
	4.1%		4.6%			
EL (Express Lanes); LL (Local Lanes)						
**Peak Period is defined as 6-9 AM (southbound) and 4-7 PM (northbound).						
***Maximum Toll Increase started in March 2014; from \$1.00 per mile, maximum, to \$1.50 per mile.						

Operations/Traffic Statistics - Speed Data

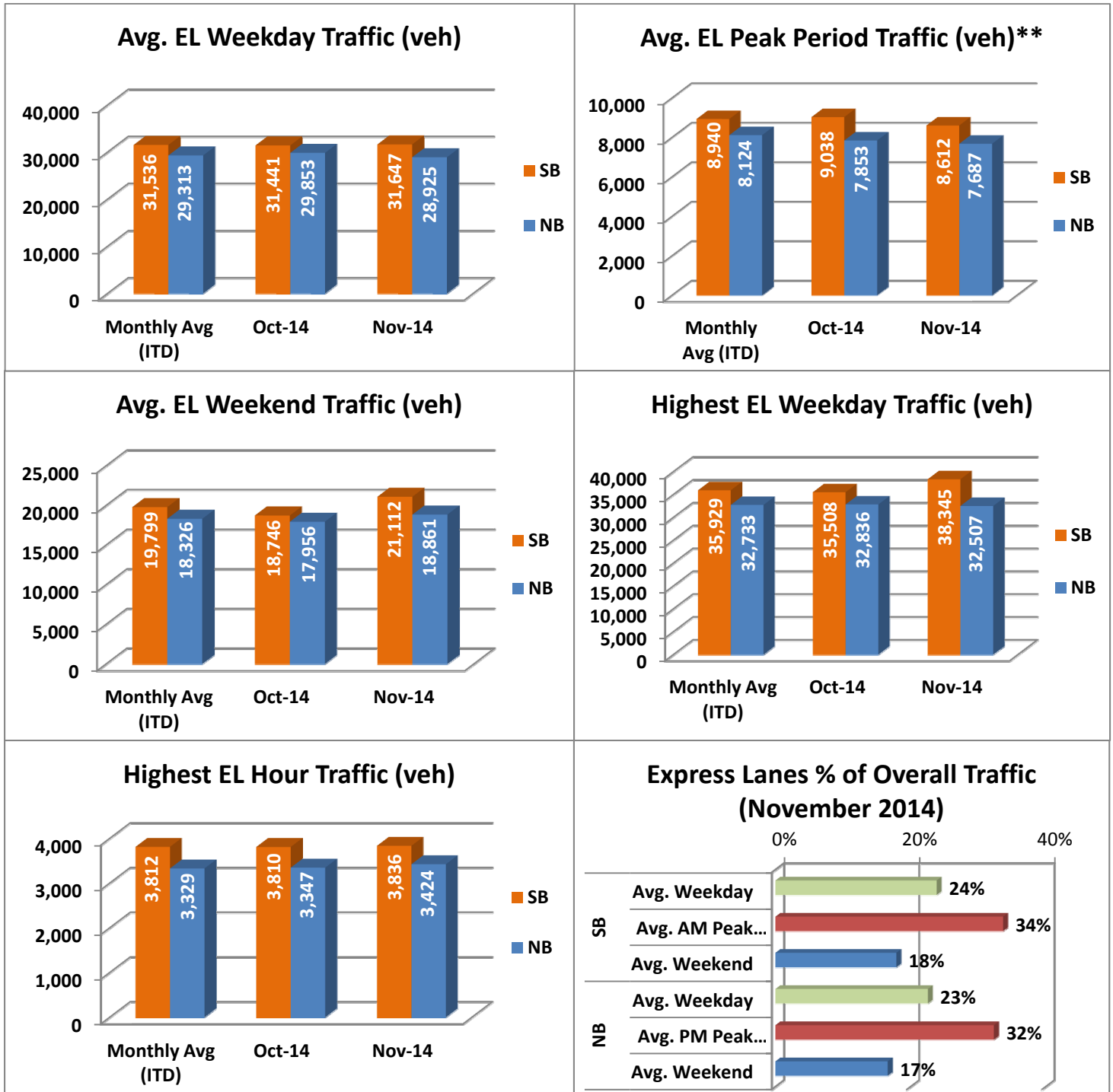
** Peak Period is defined as 6-9 AM (southbound) and 4-7 PM (northbound).



NOTE: ITD = Inception to Date

Operations/Traffic Statistics - Volume Data

** Peak Period is defined as 6-9 AM (southbound) and 4-7 PM (northbound).

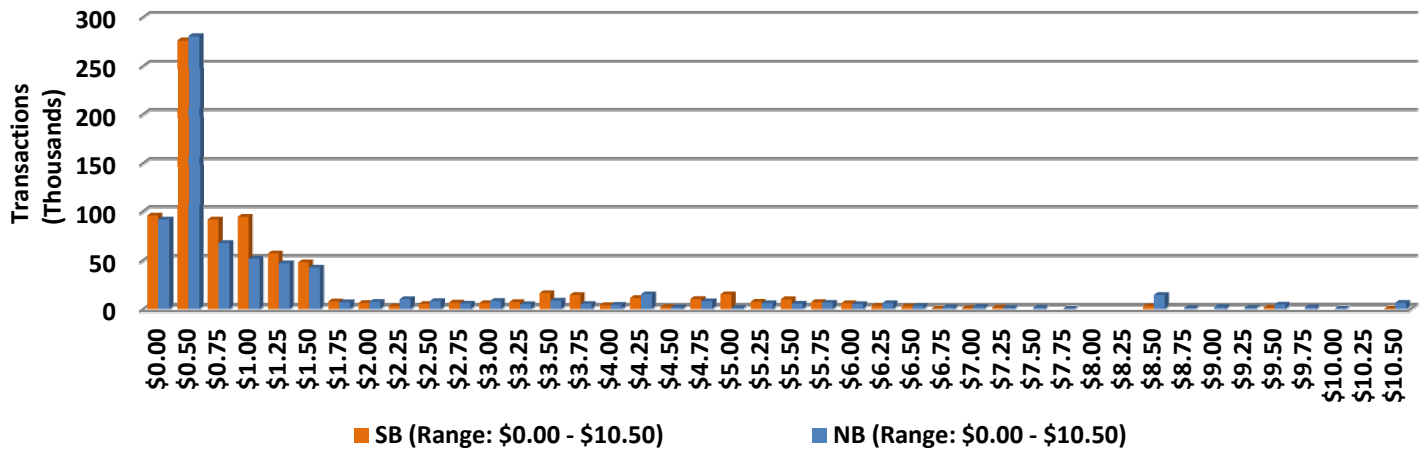


NOTE: ITD = Inception to Date

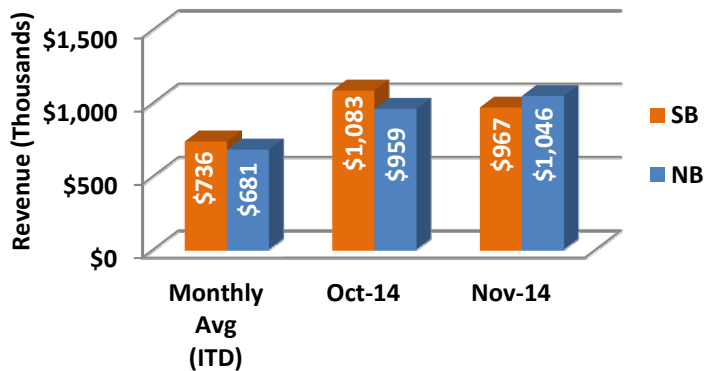
Revenue/Tolls Statistics

** Peak Period is defined as 6-9 AM (southbound) and 4-7 PM (northbound). Maximum toll increase started March 2014; from \$1.00 per mile, maximum, to \$1.50 per mile.

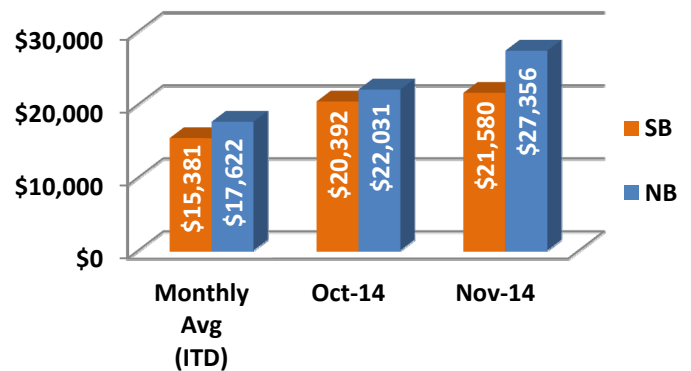
EL Weekday Total Transactions by Toll Amount Charged (November 2014)



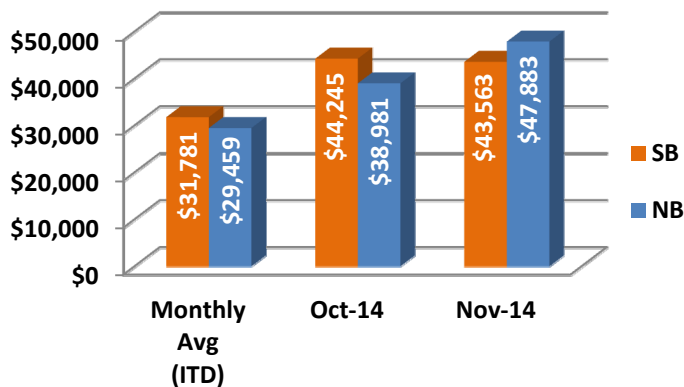
Monthly EL Revenue



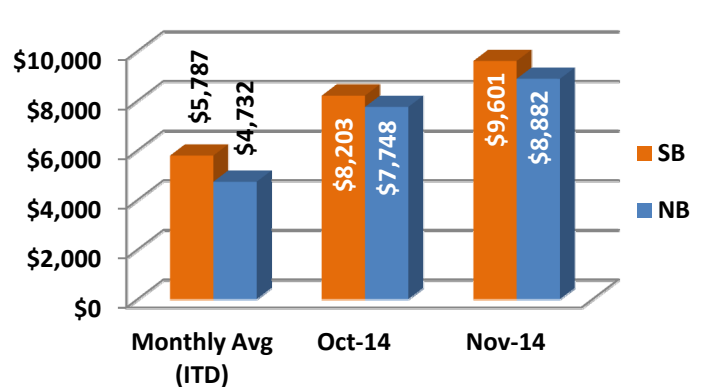
Avg. EL Peak Period Revenue**



Avg. EL Weekday Revenue



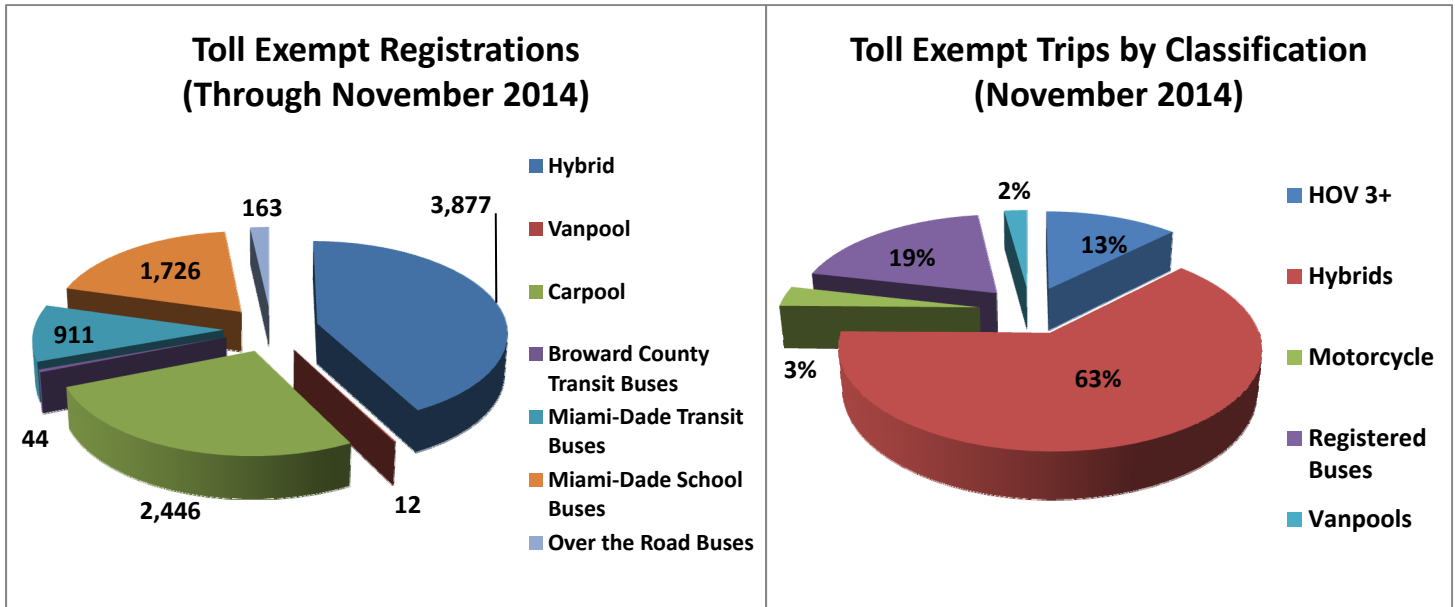
Avg. EL Weekend Revenue



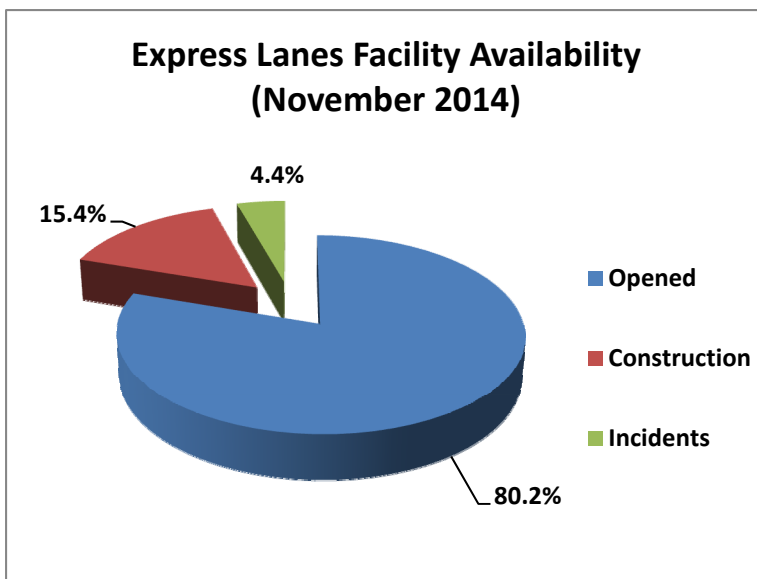
NOTE: ITD = Inception to Date

Registrations—Toll Exempt Trips

The total registrations through November 2014 increased to 9,179. The 51,277 Toll Exempt Trips for this month are shown by classification below.



Facility Availability



The entire 95 Express lanes (both directions) were open to motorists 80.2% of the time, while closed 15.4% due to 30 planned construction/ maintenance events (each lasting approximately 7 hours, 25 minutes in duration, on average) and 4.4% due to 186 non-recurring events (each lasting approximately 20.4 minutes in duration, on average).