

## 95 Express Monthly Operations Report – October 2014

### General

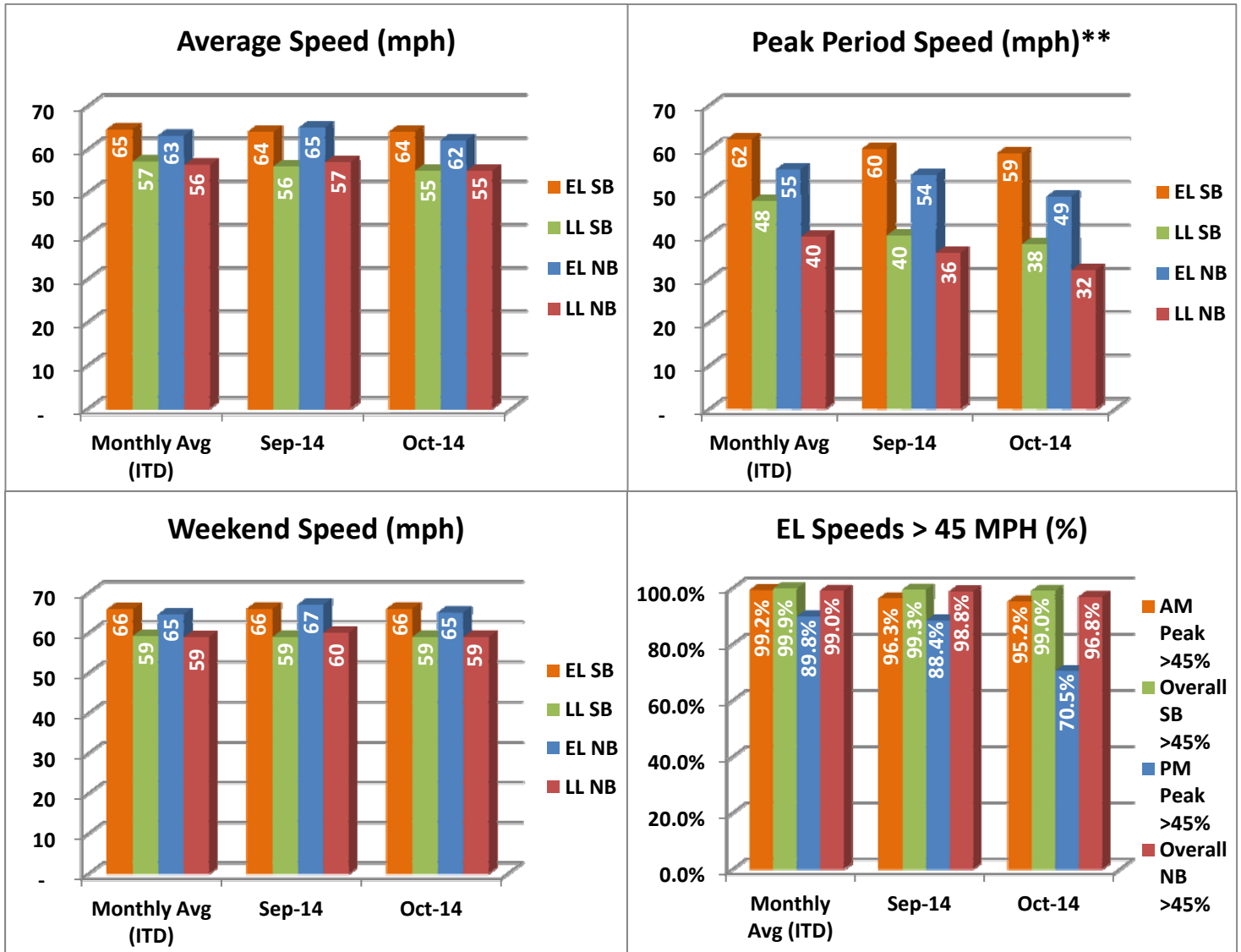
In total, the 95 Express Lanes:

- ✓ Serviced 1,703,376 vehicle trips in October 2014 (17.6M trips in 2014 to date), bringing the total since opening (December 5, 2008) to approximately 105.9 million trips.
- ✓ Had estimated monthly toll revenue of \$2.04 million in October 2014 (\$18.9M in 2014 to date), bringing the total revenue to date to approximately \$90.0 million.
- ✓ Increased to a total of 9,172 registered vehicles, resulting in 56,112 toll exempt trips.

<u>October 2014 Statistics</u>	<u>Southbound</u>			<u>Northbound</u>		
<b>Total Trips</b>	873,113			830,263		
<b>Exempt Trips</b>	31,594			24,518		
<b>Revenue</b>						
	\$1,083,261			\$958,551		
<b>Tolls</b>						
- Range***	\$0.00 - \$10.50			\$0.00 - \$10.50		
- Avg. Weekday	\$1.58			\$1.52		
- Avg. Peak Period**	\$2.54			\$3.30		
- Avg. Weekend	\$0.50			\$0.53		
- Avg. Off Peak	\$1.27			\$0.94		
- 85 <sup>th</sup> Percentile Weekday	\$3.25			\$2.50		
<b>Volume (veh)</b>						
	<b>EL</b>	<b>LL</b>		<b>EL</b>	<b>LL</b>	
- Avg. Weekday	31,441	104,201		29,853	102,652	
- Avg. Peak Period**	9,038	16,849		7,853	17,235	
<b>Speed (mph)</b>						
	<b>EL</b>	<b>LL</b>	<b>Δ</b>	<b>EL</b>	<b>LL</b>	<b>Δ</b>
- Avg. Overall	64	55	9	62	55	7
- Avg. Peak Period**	59	38	21	49	32	17
<b>Operated Above 45 MPH</b>						
	99.0%			96.8%		
<b>Remained Open to Motorists</b>						
	70.8%			72.5%		
<b>Closed due to Planned Construction</b>						
	25.5%			23.4%		
<b>Closed due to Non-recurring Events</b>						
	3.7%			4.1%		
<i>EL (Express Lanes); LL (Local Lanes)</i> <i>**Peak Period is defined as 6-9 AM (southbound) and 4-7 PM (northbound).</i> <i>***Maximum Toll Increase started in March 2014; from \$1.00 per mile, maximum, to \$1.50 per mile.</i>						

## Operations/Traffic Statistics - Speed Data

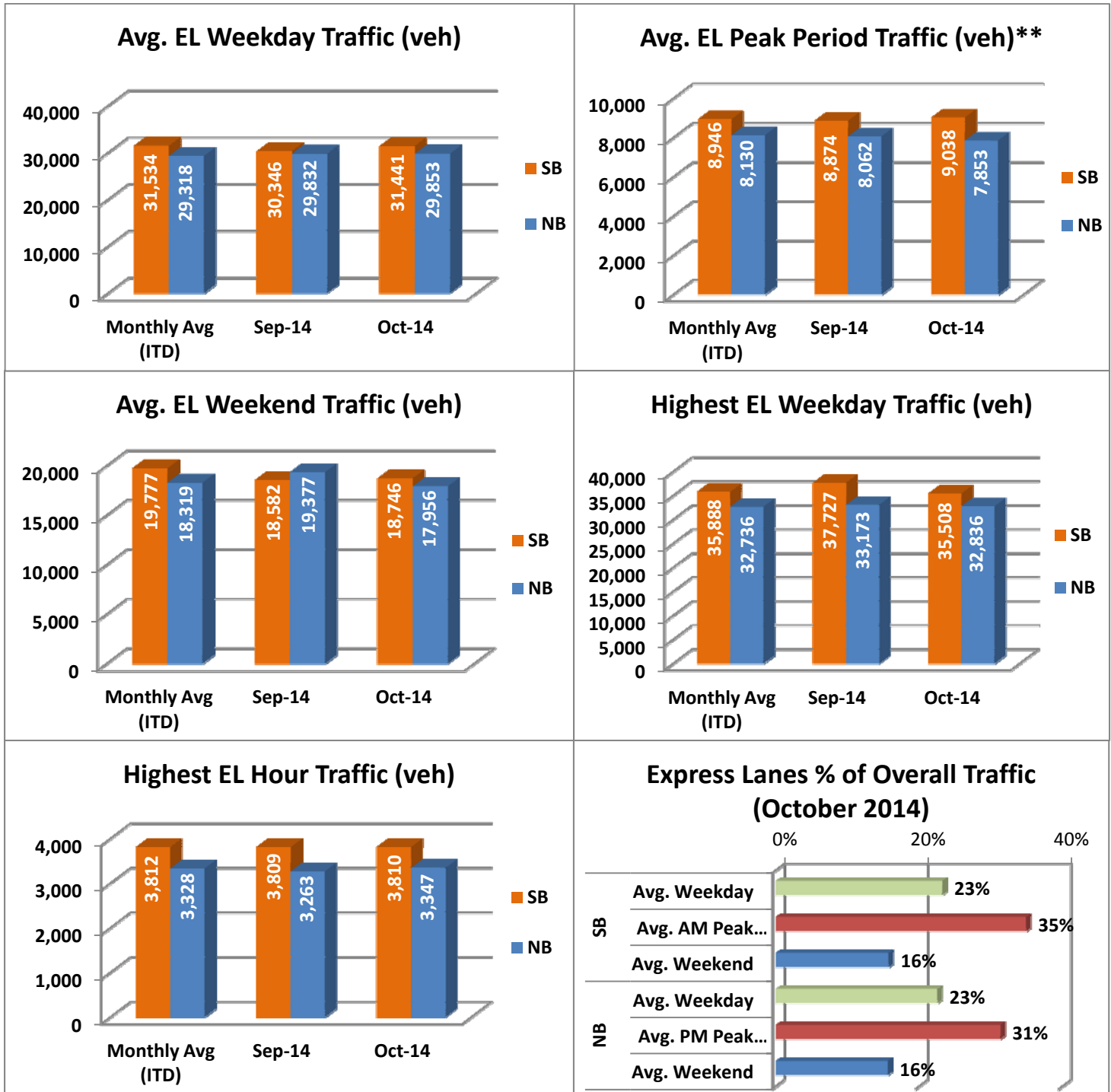
\*\* Peak Period is defined as 6-9 AM (southbound) and 4-7 PM (northbound).



NOTE: ITD = Inception to Date

## Operations/Traffic Statistics - Volume Data

\*\* Peak Period is defined as 6-9 AM (southbound) and 4-7 PM (northbound).

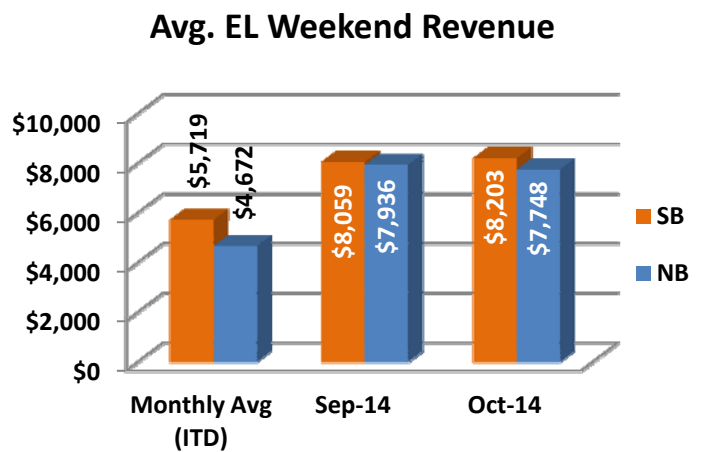
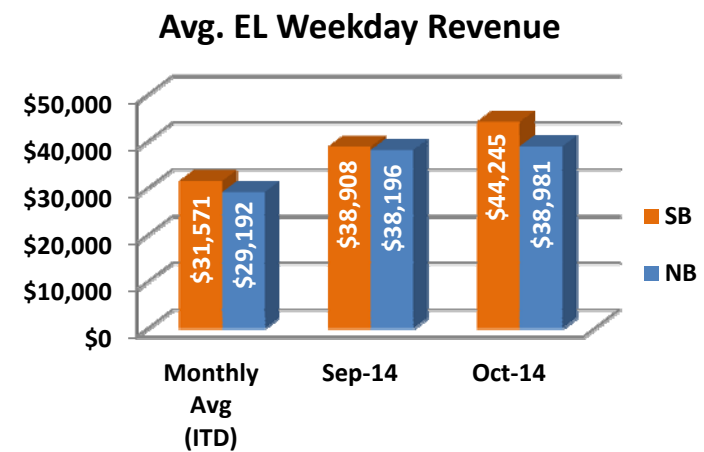
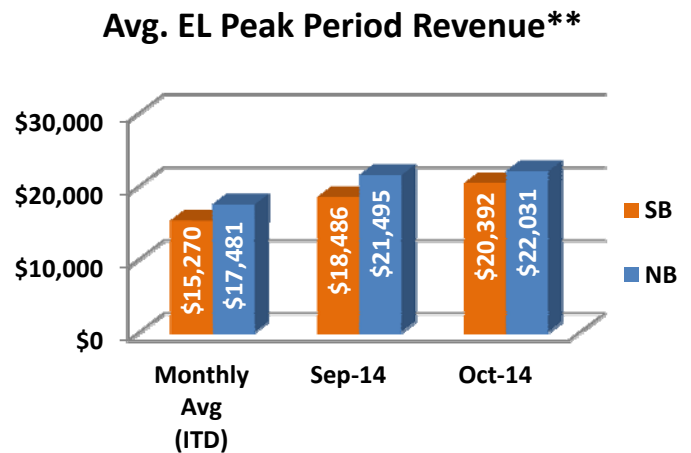
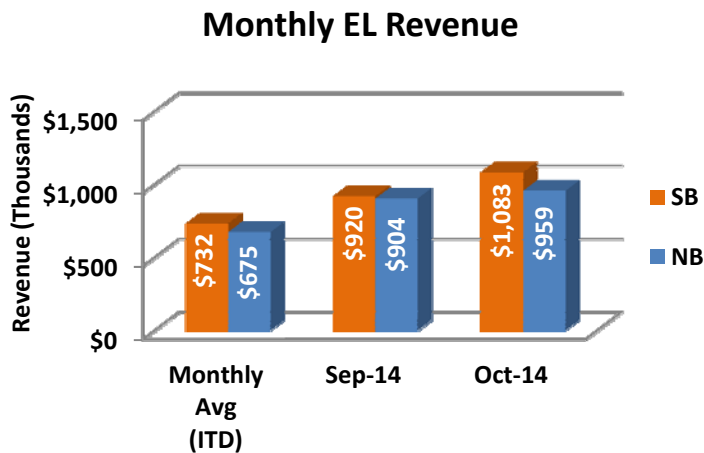
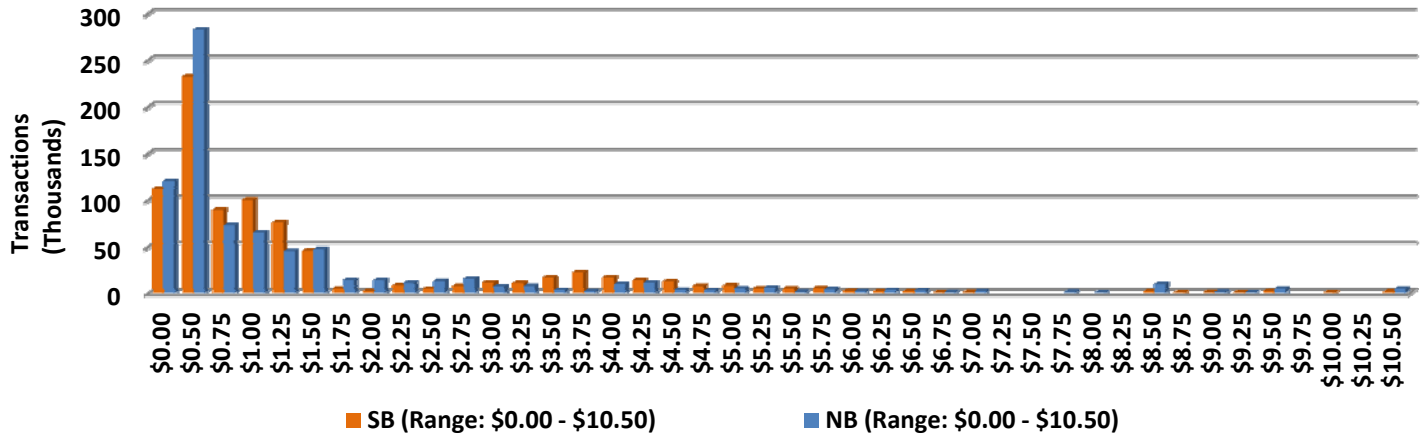


NOTE: ITD = Inception to Date

## Revenue/Tolls Statistics

\*\* Peak Period is defined as 6-9 AM (southbound) and 4-7 PM (northbound). Maximum toll increase started March 2014; from \$1.00 per mile, maximum, to \$1.50 per mile.

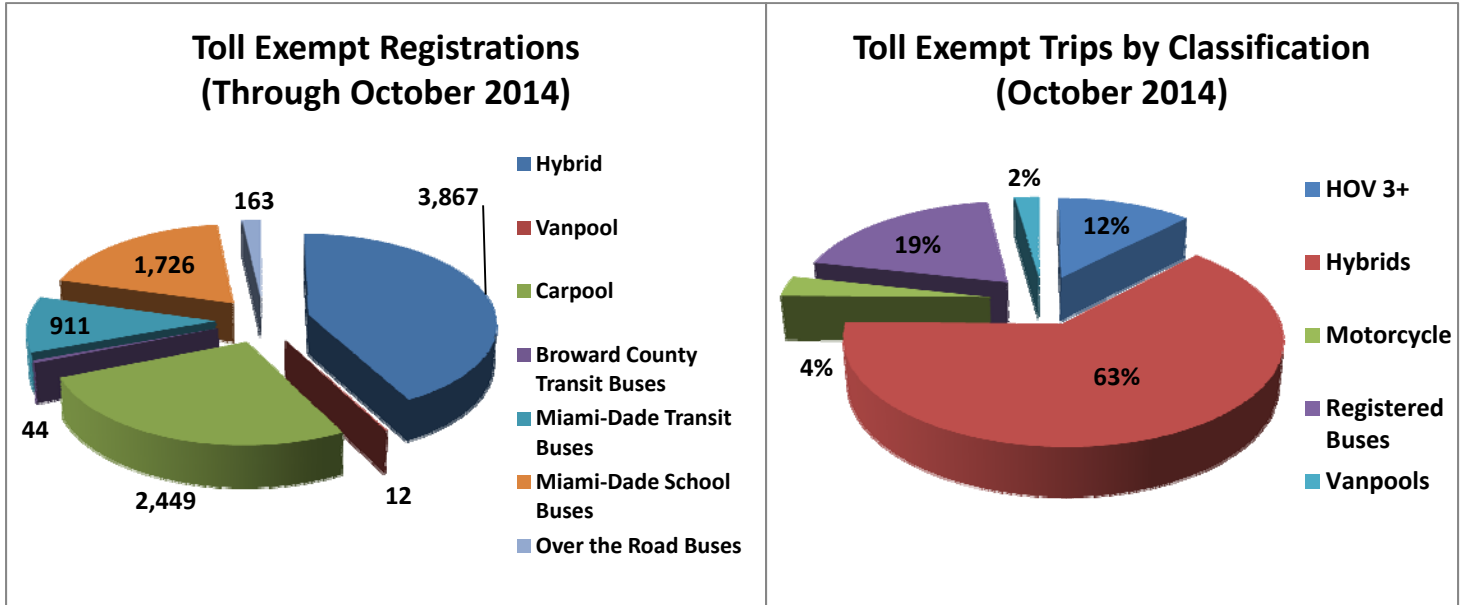
**EL Weekday Total Transactions by Toll Amount Charged (October 2014)**



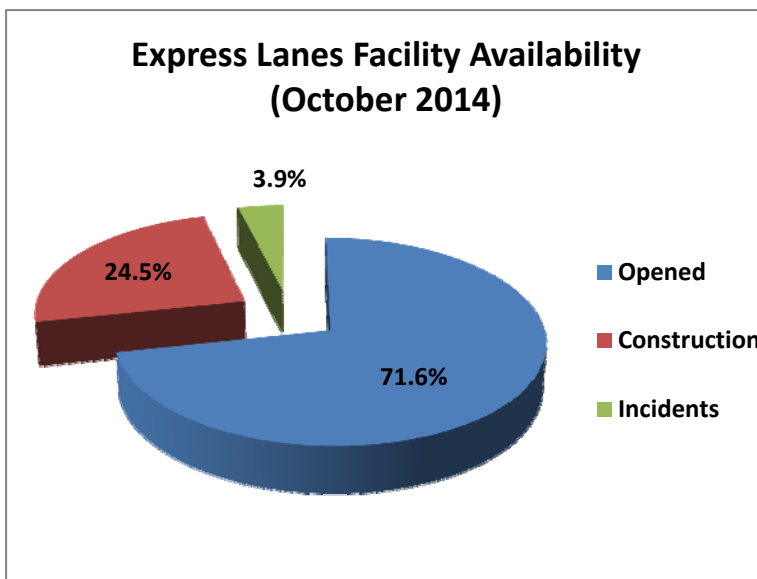
NOTE: ITD = Inception to Date

## Registrations—Toll Exempt Trips

The total registrations through October 2014 increased to 9,172. The 56,112 Toll Exempt Trips for this month are shown by classification below.



## Facility Availability



The entire 95 Express lanes (both directions) were open to motorists 71.6% of the time, while closed 24.5% due to 51 planned construction/ maintenance events (each lasting approximately 7 hours, 8 minutes in duration, on average) and 3.9% due to 228 non-recurring events (each lasting approximately 15.3 minutes in duration, on average).