

95 Express Monthly Operations Report – July 2016

General

In total, the 95 Express Lanes:

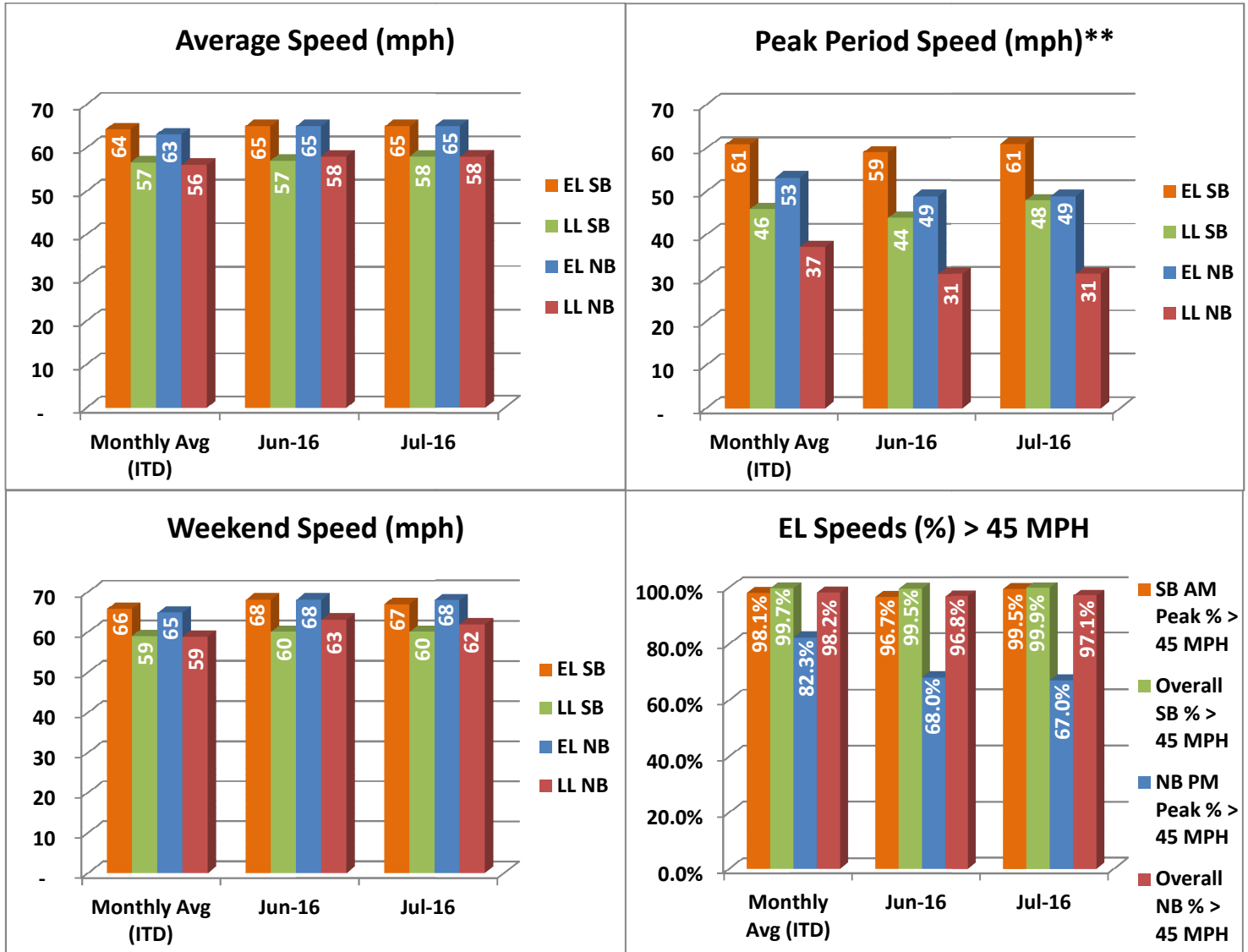
- ✓ Serviced 1,828,089 vehicle trips in July 2016 (approximately 13.2 million trips in 2016 to date), bringing the total since opening (December 5, 2008) to approximately 144.0 million trips.
- ✓ Had estimated monthly toll revenue of \$2.24 million in July 2016 (approximately \$19.5 million in 2016 to date), bringing the total revenue since opening to date to approximately \$144.0 million.

Increased to a total of 9,084 registered vehicles; resulting in 66,482 toll exempt trips.

<u>July 2016 Statistics</u>	<u>Southbound</u>		<u>Northbound</u>			
Total Trips	954,015		874,074			
Exempt Trips	34,613		31,869			
Revenue						
	\$855,312		\$1,388,863			
Tolls						
- Range	\$0.00 - \$5.25		\$0.00 - \$10.50			
- Avg. Weekday	\$1.19		\$2.33			
- Avg. Peak Period**	\$1.64		\$6.17			
- Avg. Weekend	\$0.56		\$0.53			
- Avg. Off Peak	\$1.07		\$1.32			
- 85 th Percentile	\$1.75		\$4.25			
Volume (veh)						
	EL	LL	EL	LL		
- Avg. Weekday	34,200	106,169	30,772	103,570		
- Avg. Peak Period**	9,001	17,169	6,930	16,245		
Speed (mph)						
	EL	LL	Δ	EL	LL	Δ
- Avg. Overall	65	58	7	65	58	7
- Avg. Peak Period**	61	48	13	49	31	18
Operated Above 45 MPH						
	99.9%		97.1%			
Remained Open to Motorists						
	95.8%		94.1%			
Closed due to Planned Construction						
	2.1%		2.9%			
Closed due to Non-recurring Events						
	2.1%		3.0%			
<i>EL (Express Lanes); LL (Local Lanes); **Peak Period is defined as 6-9 AM (southbound) and 4-7 PM (northbound).</i>						

Operations/Traffic Statistics - Speed Data

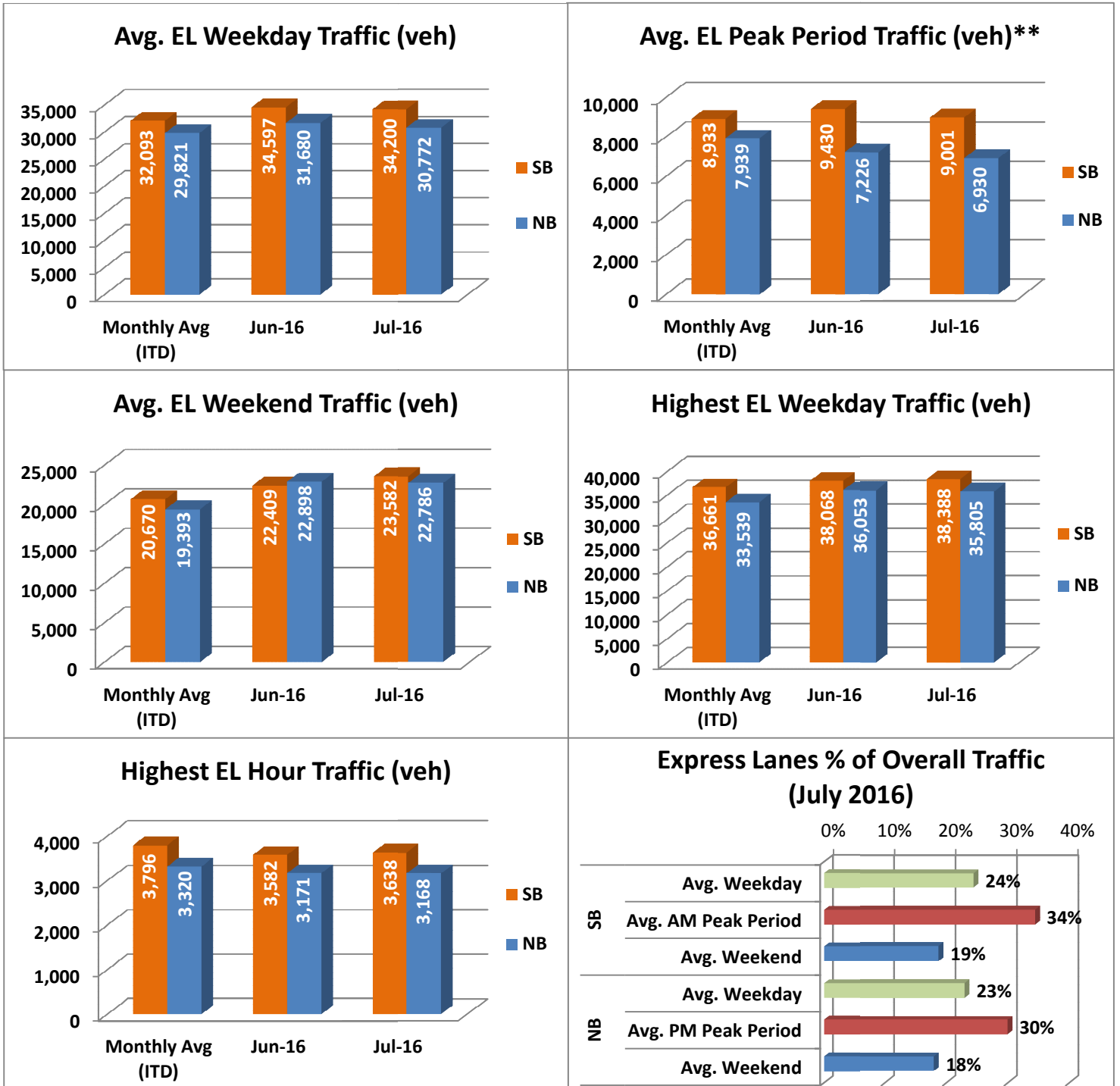
** Peak Period is defined as 6-9 AM (southbound) and 4-7 PM (northbound).



NOTE: ITD = Inception to Date; EL = Express Lanes; LL = Local Lanes

Operations/Traffic Statistics - Volume Data

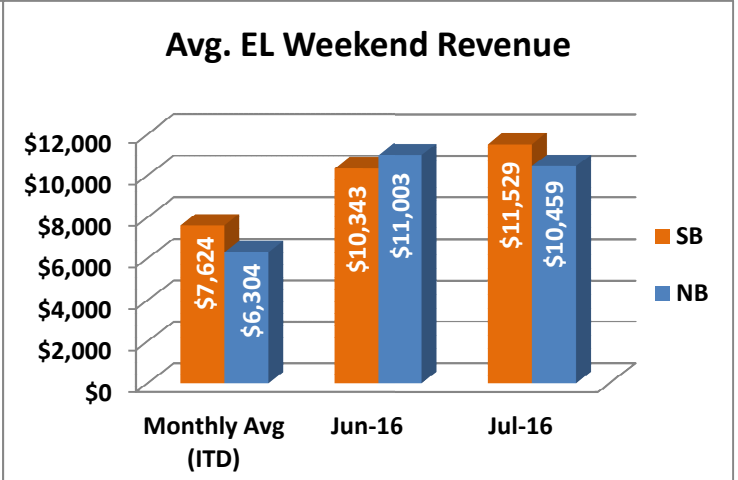
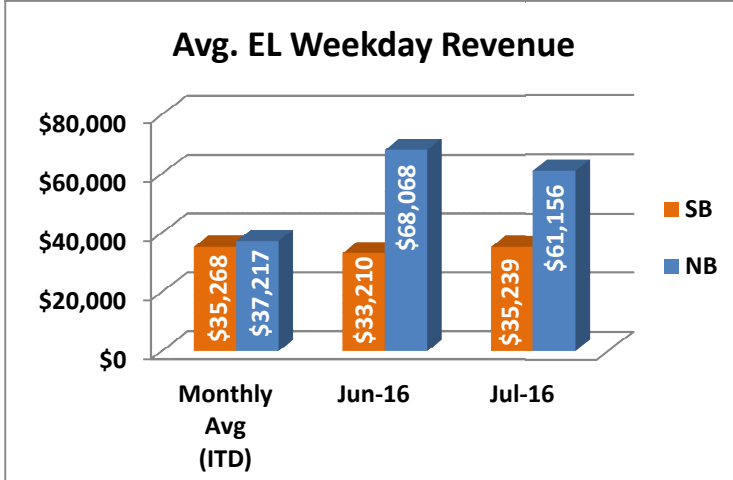
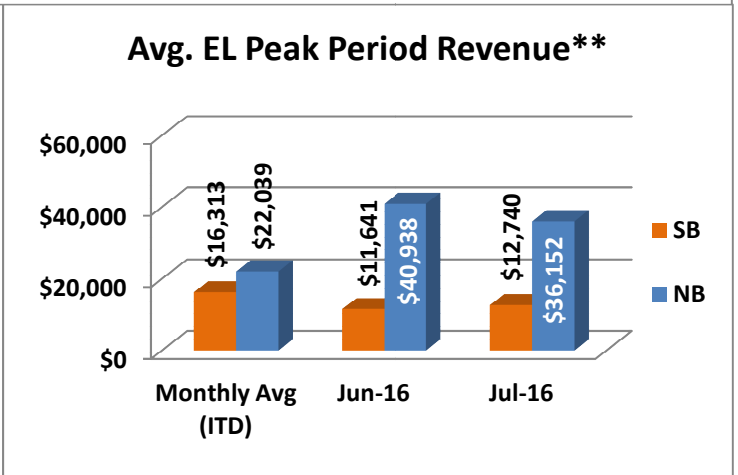
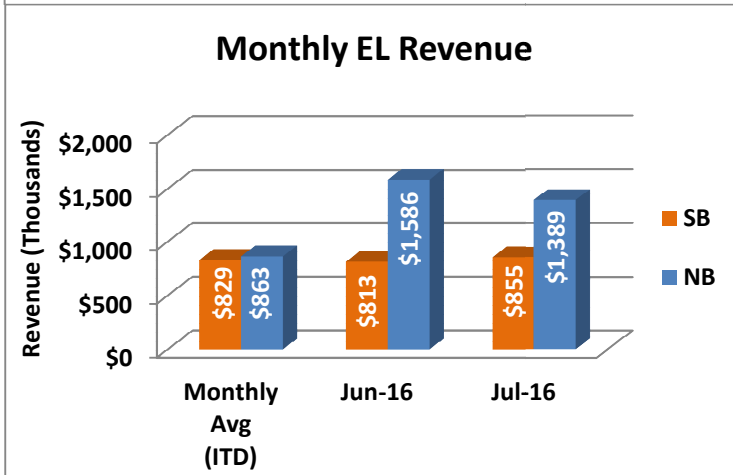
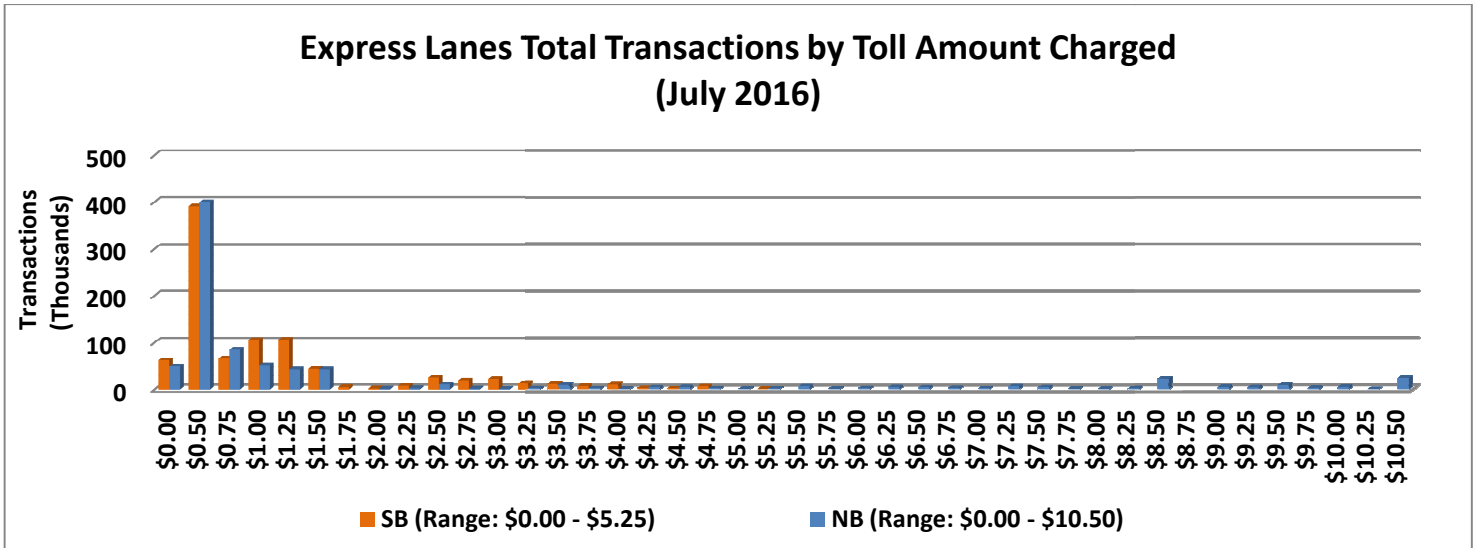
** Peak Period is defined as 6-9 AM (southbound) and 4-7 PM (northbound).



NOTE: ITD = Inception to Date

Revenue/Tolls Statistics

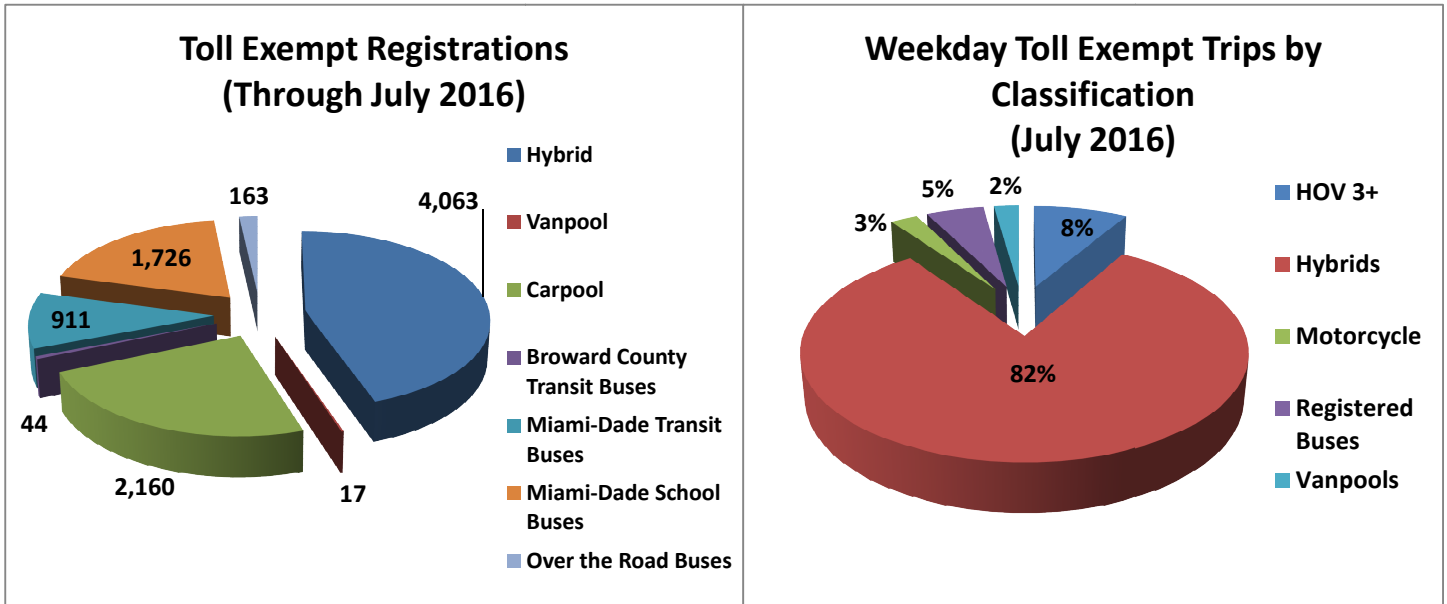
** Peak Period is defined as 6-9 AM (southbound) and 4-7 PM (northbound).



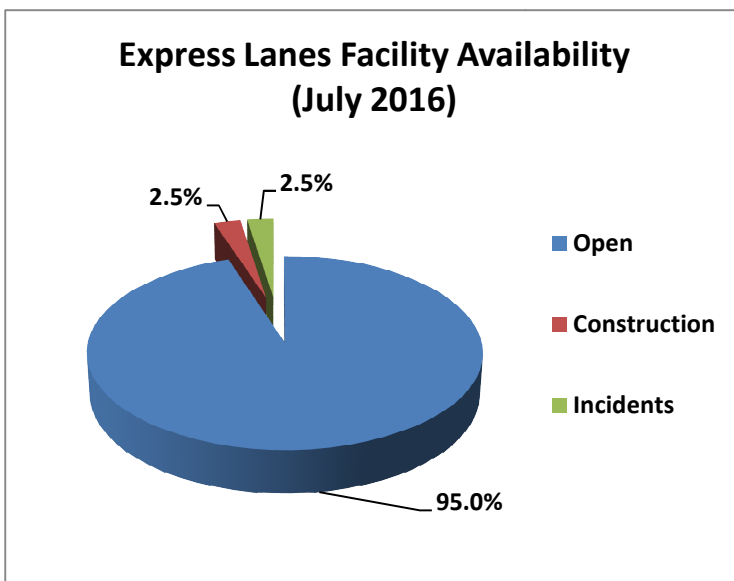
NOTE: ITD = Inception to Date

Registrations—Toll Exempt Trips

The total registrations through July 2016 increased to 9,084. The Weekday Toll Exempt Trips for this month are shown by classification below.



Facility Availability



The entire 95 Express lanes (both directions) were open to motorists 95.0% of the time, while closed 2.5% due to 10 planned construction/ maintenance events (each lasting approximately 3 hours, 46 minutes in duration, on average) and 2.5% due to 88 non-recurring events (each lasting approximately 25 minutes in duration, on average).